



# C.A.S.H. Project

*Connecting Authorities for  
Safer Heavy Goods Traffic in the  
Baltic Sea Region  
(2009-2012)*

Approved in the 2<sup>nd</sup> round of calls for projects under the Baltic  
Sea Region Programme 2007-2013

9.9.2009

1



Part-financed by the European Union (European Regional Development Fund and European Neighbourhood and Partnership Instrument)



# C.A.S.H. Project at a glance

- Project duration 36 months (10.9.2009-9.9.2012)
- Total budget 3.4 MEUR
- 14 partners in 8 countries
  
- Lead partner Turku School of Economics, Finland
  
- Project approved in the 2<sup>nd</sup> round of calls for projects under the Baltic Sea Region Programme 2007-2013





# Baltic Sea Region Programme 2007-2013

## Strategic objective and priorities



9.9.2009

3





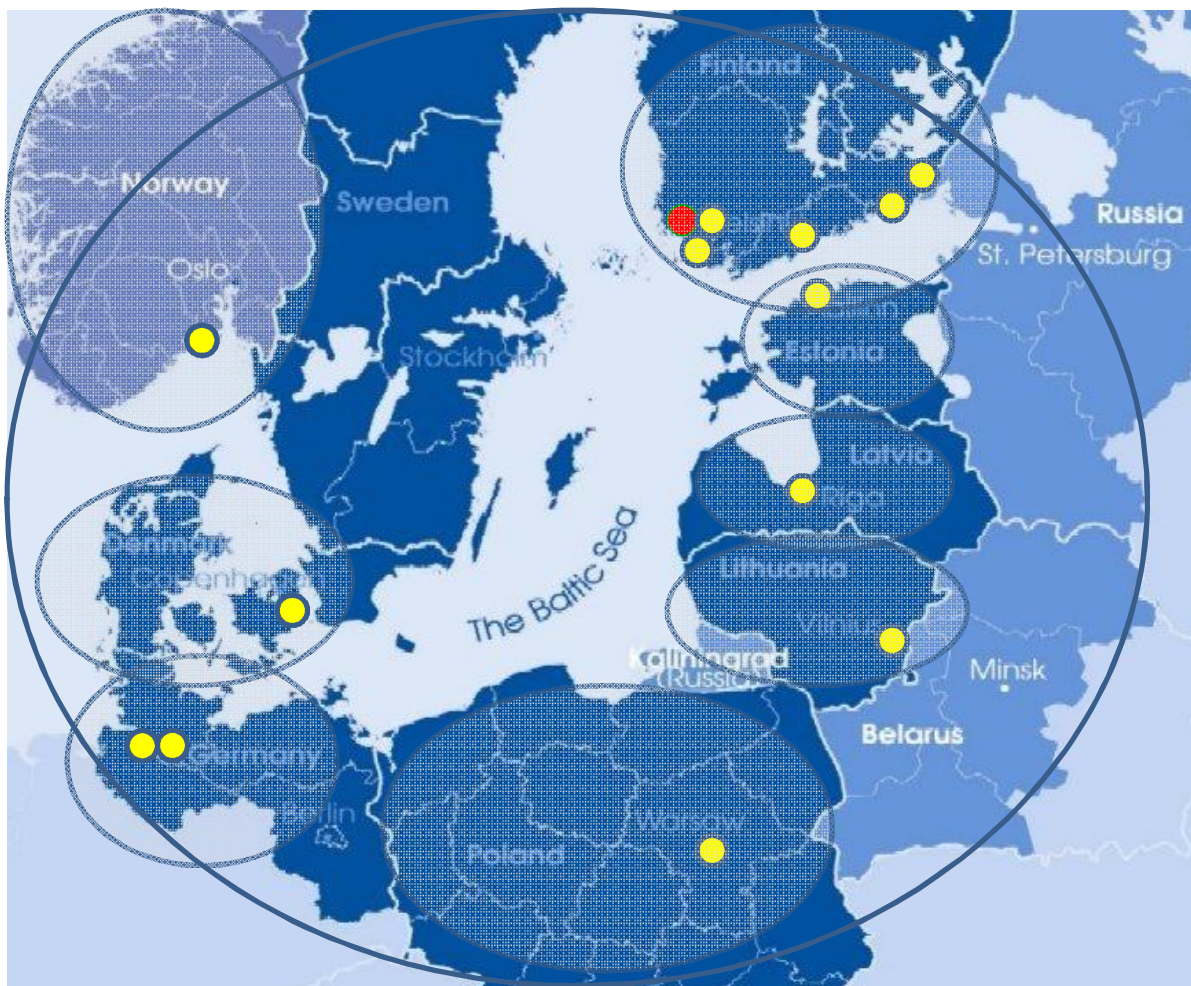
# C.A.S.H Project coverage

## Organizations involved:

- Road police
- Other Authorities
- Regional Councils
- Academia
- Ministries in the Supervisory board, incl. Sweden

## Modes:

- Road
- Intermodal



9.9.2009

4



Part-financed by the European Union (European Regional Development Fund and European Neighbourhood and Partnership Instrument)



# C.A.S.H. Main Themes

- Harmonizing training requirements of heavy goods vehicles (HGV) and dangerous goods (DG) inspection officials in the Baltic Sea region
- Enhancing cooperation between authorities involved in safety of border-crossing HGV, DG and oversize transport
- Testing state-of-the-art safety and security equipment and IT systems to be used by relevant authorities



# C.A.S.H. Workpackage Structure

WP1 Project Management and Administration  
WP2 Dissemination and information

WP3  
Behaviour  
and Training

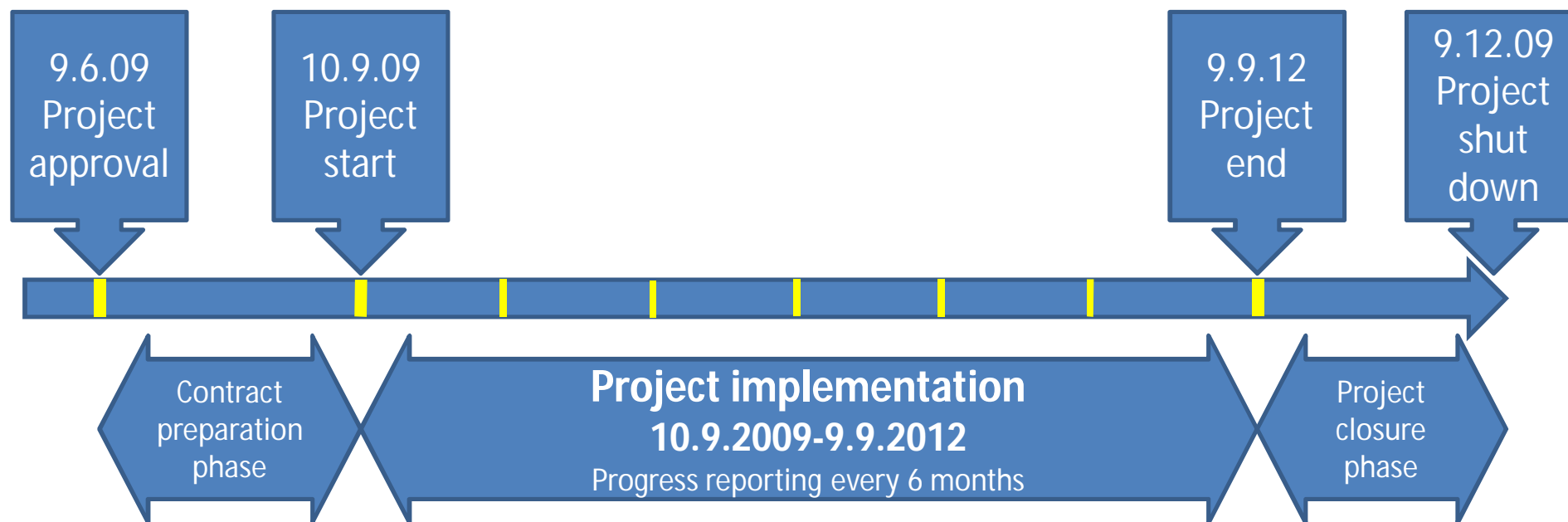
WP4  
Cooperation  
between  
authorities

WP5  
Equipment,  
safety and  
risk





# C.A.S.H. Project Time Line



9.9.2009

7



Part-financed by the European Union (European Regional Development Fund and European Neighbourhood and Partnership Instrument)



# C.A.S.H. Project office

## Staff

### Project Director Prof. Lauri Ojala

E-mail: [lauri.ojala@tse.fi](mailto:lauri.ojala@tse.fi)  
Phone: +358 2 4814 243  
Mobile: +358 50 502 7031

### Project Manager M.Sc. Torsten Hoffmann

E-mail: [torsten.hoffmann@tse.fi](mailto:torsten.hoffmann@tse.fi)  
Mobile: +358 50 5629737

### Research Assistant Karri Rantasila

E-mail: [karri.rantasila@tse.fi](mailto:karri.rantasila@tse.fi)  
Phone: +358 2 4814 415  
Mobile: +358 50 4080720

## Mailing and visiting address:

### C.A.S.H. Project office

Turku School of Economics  
Rehtorinpellonkatu 3  
FI-20500 TURKU  
FINLAND

