

DaGoB Meeting Helsinki

Telematics Solutions for the Finnish Railways

Sirkka-Leena Holmberg
Project Co-ordinator

VR Ltd Finnish Railways, VR Cargo

14.8.2007

Presentation contents

General Presentation

VR Cargo e-Business solutions

RailCom co-operation

RailCust project

RailTrace service

VR and rail authorities

VR Group

- Rail services
- Track construction and maintenance
- Road services
- Catering and restaurant services
- Telecommunications services

Ministry of Transport and Communications

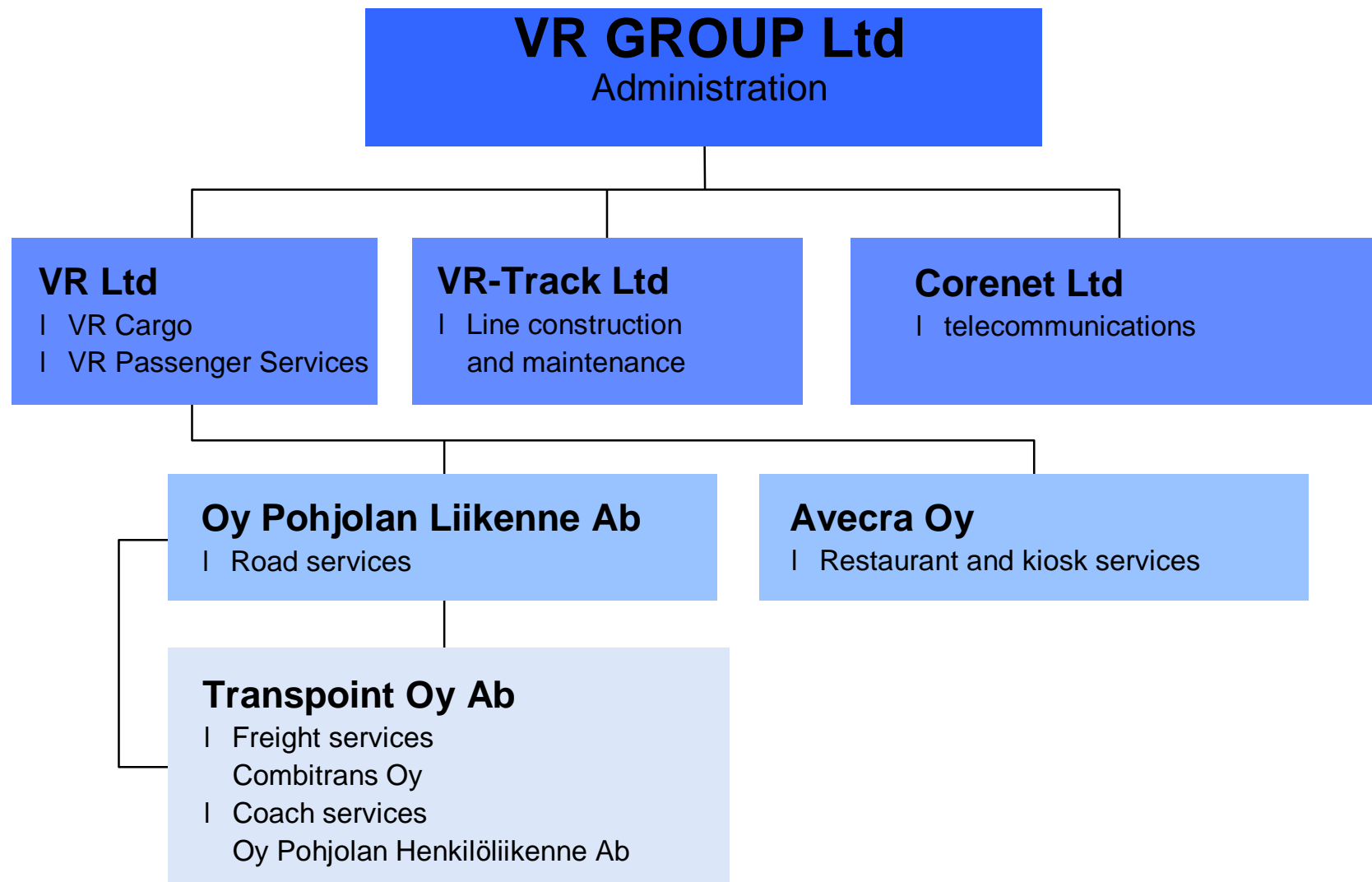
- Railway legislation and licensing
- Commissioning of passenger services

Finnish Rail Administration

- Administration of the rail network and responsibility for line maintenance and development
- Rail network safety
- Administration of track capacity and traffic control

Finnish Rail Agency

- Safety regulations and monitoring
- Interoperability of railway systems
- Drawing up standards for the sector



VR in figures

Net turnover EUR **1.2 billion**

65 million rail passengers

11 million bus and coach passengers

44 million tonnes of rail freight

10 million tonnes of road freight

Personnel **12,500**



A quarter of all freight travels by rail

About **500** freight trains are in service every day in Finland

Almost **44** million tonnes of freight are transported a year

More than **60%** of the carryings are the raw materials and products of the forest industry

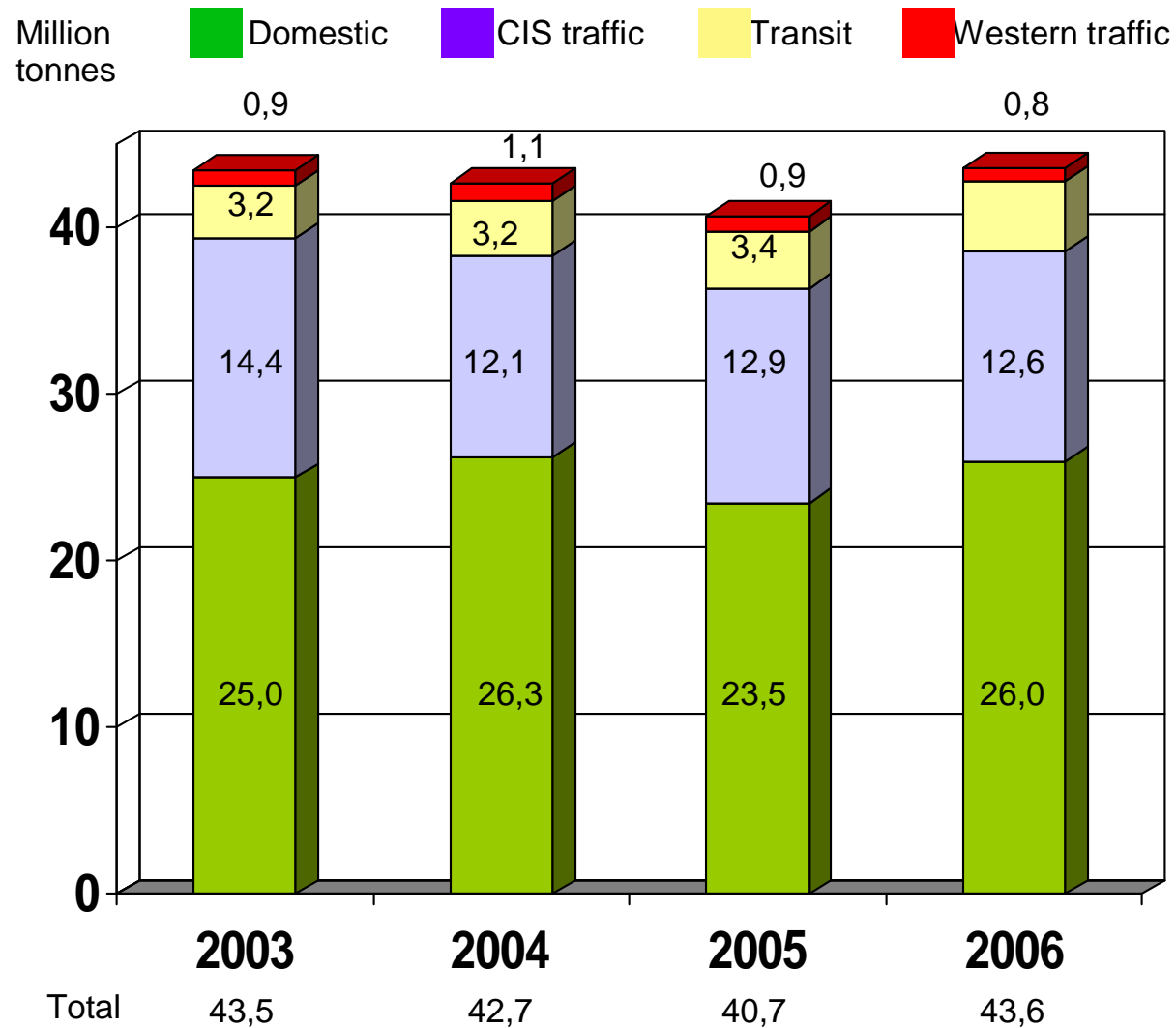
40% of the carryings are services to and from Russia

VR Cargo provides smooth freight services

VR Cargo is the main carrier for Finland's forest, metal and chemical industries in domestic and international freight transportation.

- The total service also includes road transport, storage and forwarding
- The service network comprises all of Finland and international routes
- Long-standing relations with Russian railways are a strong point

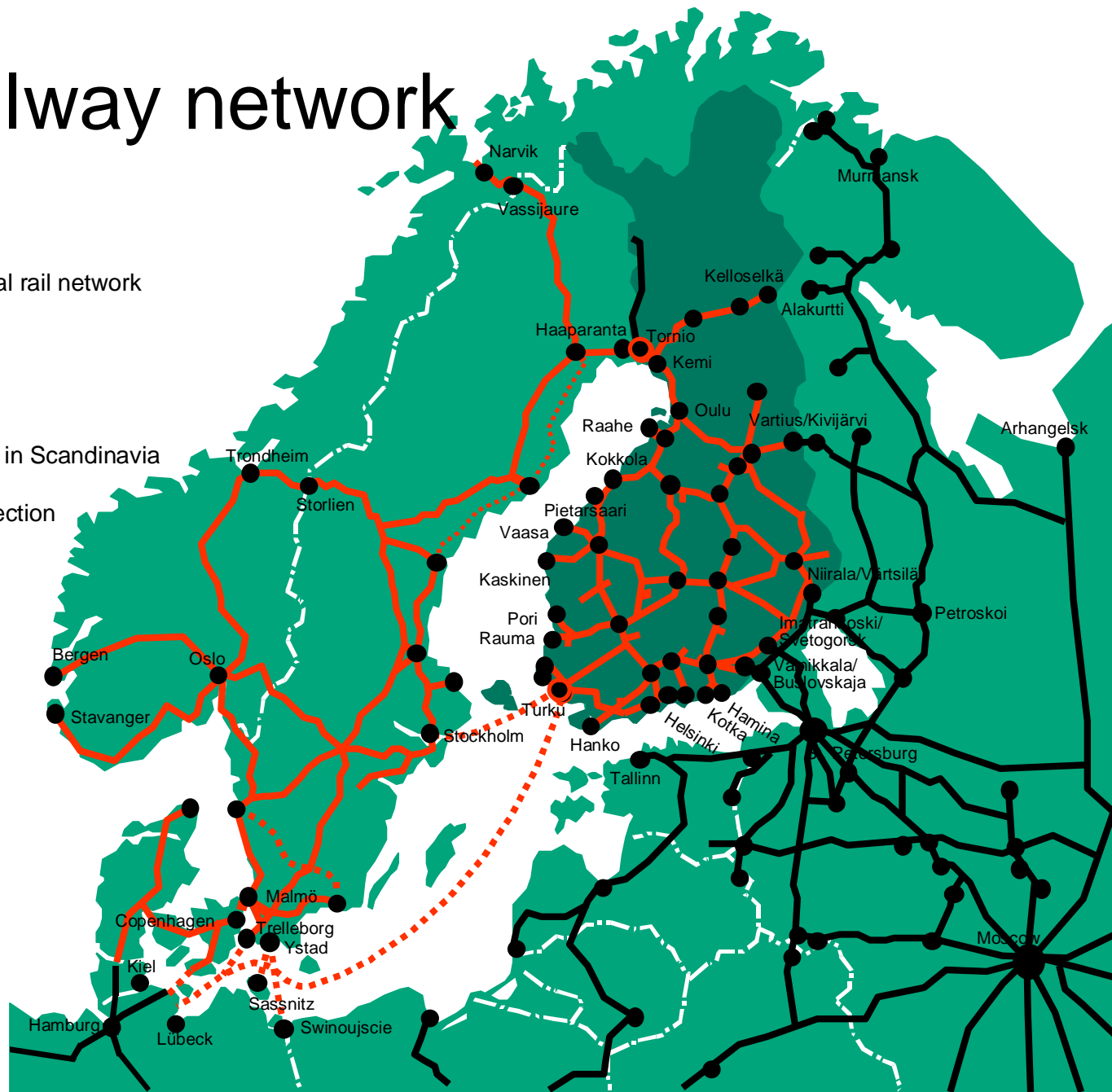
Development in wagon loads 2003-2006



13.8.2007, Sirkka-Leena Holmberg, sivu 8

Nordic railway network

- Nordic international rail network
- Other rail network
- - - Train ferry
- · · · · Future connection in Scandinavia
- · · · · Other future connection
- Bogie change



Infrastructure



13.8.2007, Sirkka-Leena Holmberg, sivu 10

Presentation contents

General Presentation

VR Cargo e-Business solutions

RailCom co-operation

RailCust project

RailTrace service

Data Jungle



World Wide Web

- internet
- extranet
- intranet

Telephone

- conventional
- mobile

PC

- conventional
- portable

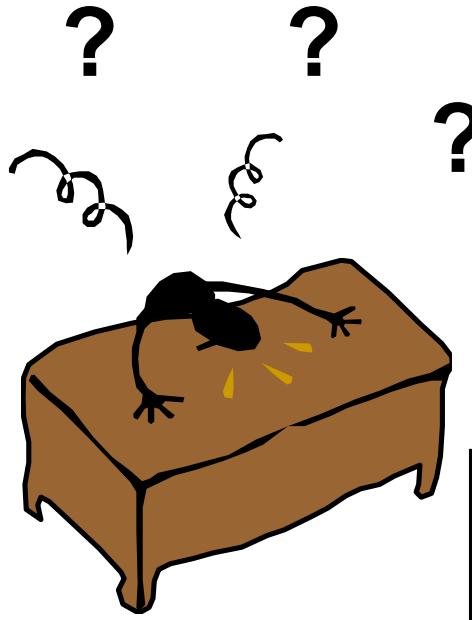
Telefax

E-mail

- channel for ads
- internal communication
- external communication

Documents

- personal archive
- department archive
- company archive
- catalogues
- newspapers
- magazines



Common process at the Customer and VR

Customer process



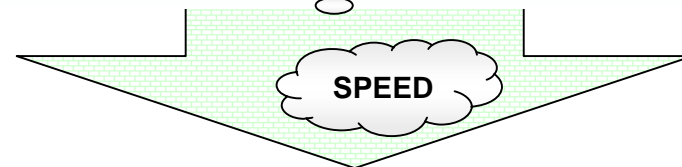
Common process



Customer process



Common process



VR Cargo process

VR Cargo process





e-Cargo services

Service concepts developed in co-operation with the customers

- EDI (Electronic Data Interchange)
- Railnetti portal
 - Information open for all – instructions, maps etc.
 - Operative services online
 - Document archive
 - Booking
 - Consignment notes - western, eastern, domestic
 - Tracking and tracing (RailTrace)



Customised e-Cargo services

Service concept - all information in one server

Service concept is based on common processes - information flows and information needs, e.g.

- Incoming consignments and transports
- Outgoing consignments and transports
- Tracking and tracing
- Consignment notes with accompanying documents
- Shunting plans
- Informative unity

Presentation contents

General Presentation

VR Cargo e-Business solutions

RailCom co-operation

RailCust project

RailTrace service

RailCom co-operation

The co-operation started in 1992

The objectives and results

- Waybill information exchange between Russian and Finnish Railways by using EDIFACT standard → in production since 2003
- Shared border crossing procedures to speed up Finnish - Russian border processes → fast and reliable transports
- Railway wagon and consignment tracking and tracing support
→ RailTrace -service
- Electronic information transmission to border crossing places and destination locations, to customs and other authorities
→ exchanged electronic information in production on border crossing stations both in Russia and Finland
→ no transmission to customs nor other authorities, yet

Presentation contents

General Presentation

VR Cargo e-Business solutions

RailCom co-operation

RailCust project

RailTrace service

RailCust project

Objectives and results

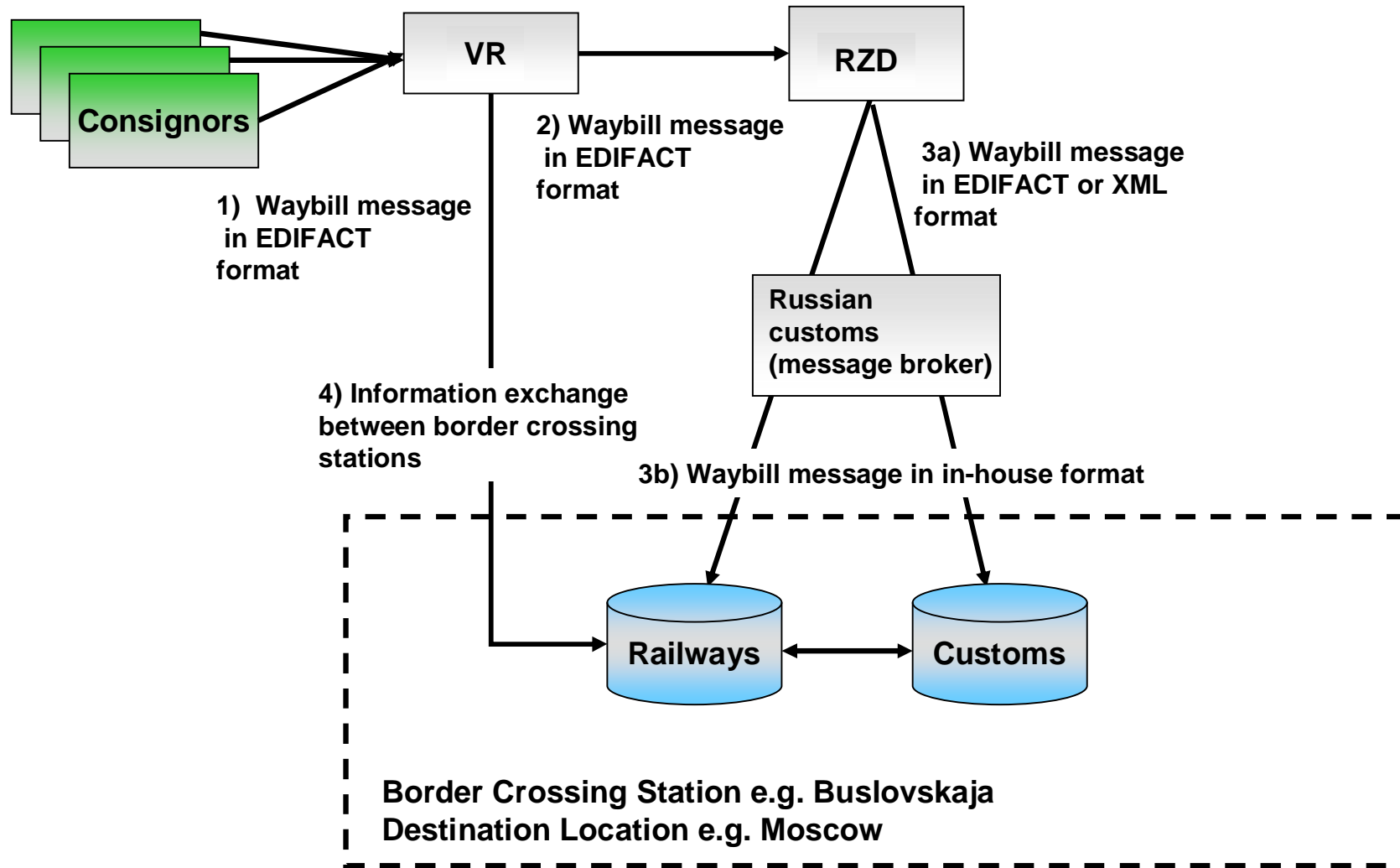
- Confidential co-operation between railways and customs in Russia and Finland
 - à agreement between RZD and Russian Customs
 - à agreement between VR and Finnish Customs
- Expansion of RailCom and RailTrace projects to facilitate customs procedures
 - à better control over the goods and information flows
- Preparation of border crossing processes before the physical arrival of the goods
 - à document translation, customs procedures, other authorities procedures (e.g. veterinary and phytosanitary authorities)
- Faster train handling at the border
 - à less trains to be returned due to lack of information or incorrect information

RailCust project

Further actions:

- Processes between stakeholders on the border crossing stations described
- Further development actions recognized
- Operational functions between railways and border crossing authorities agreed
- Message standards, structure and content as well as telecommunication way defined
- Implementation timetable for testing and full use agreed

RailCust - basic concept



Presentation contents

General Presentation

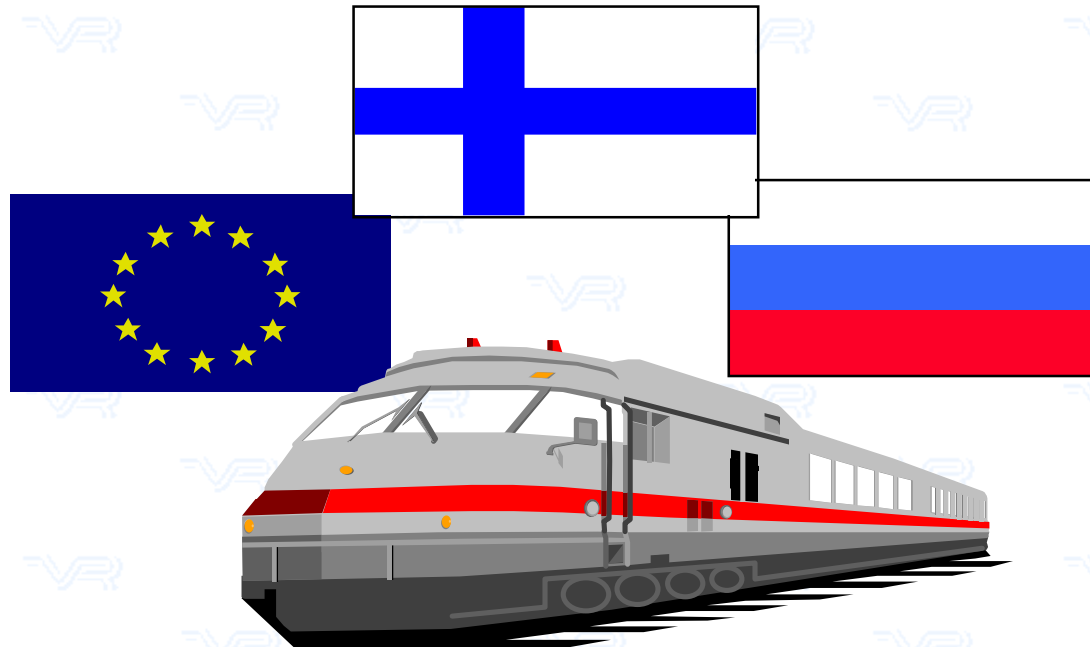
VR Cargo e-Business solutions

RailCom co-operation

RailCust project

RailTrace service

RailTrace service



Where did it all begin?

RailTrace service

As background a business study for Finnlines in 1997

- what is the current status of services and functions
- what is needed in order to improve customer satisfaction

Result:

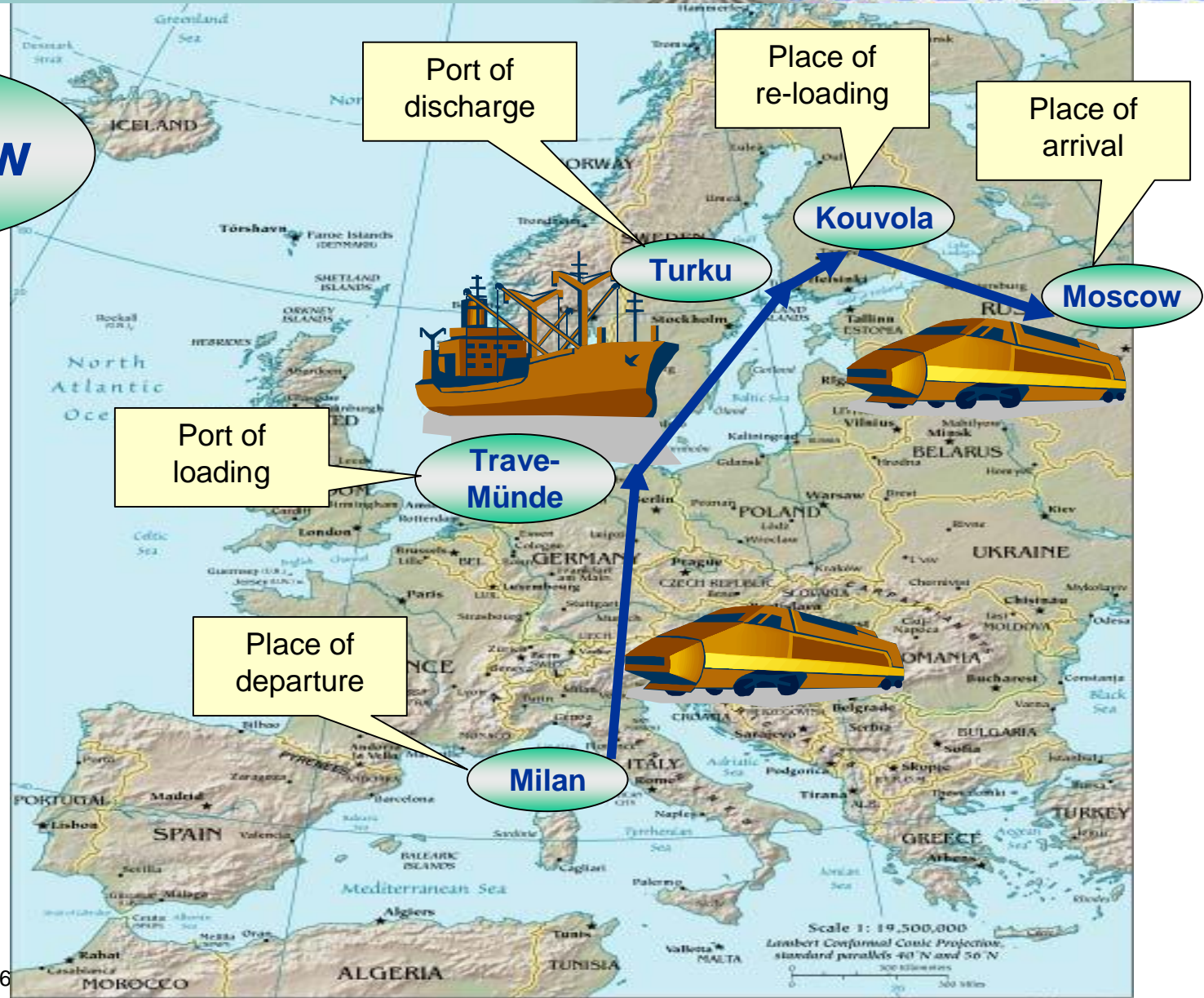
- Biggest problem was LACK OF INFORMATION
 - **needs for better customer service**
 - **needs for better control over the goods flow**
 - **needs for better information flow**

Why RailTrace service?

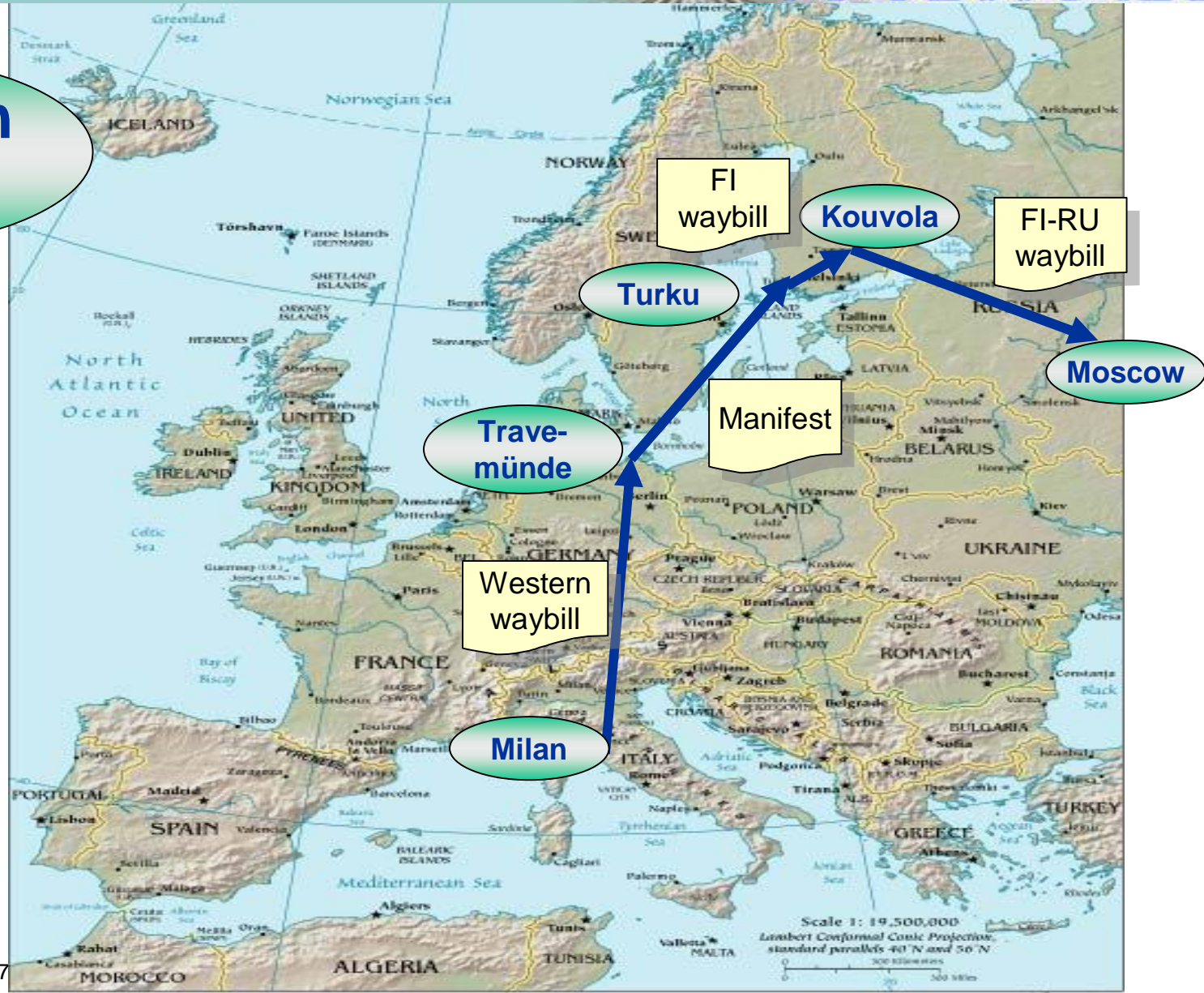
Where is the beef?



Material flow



Information flow

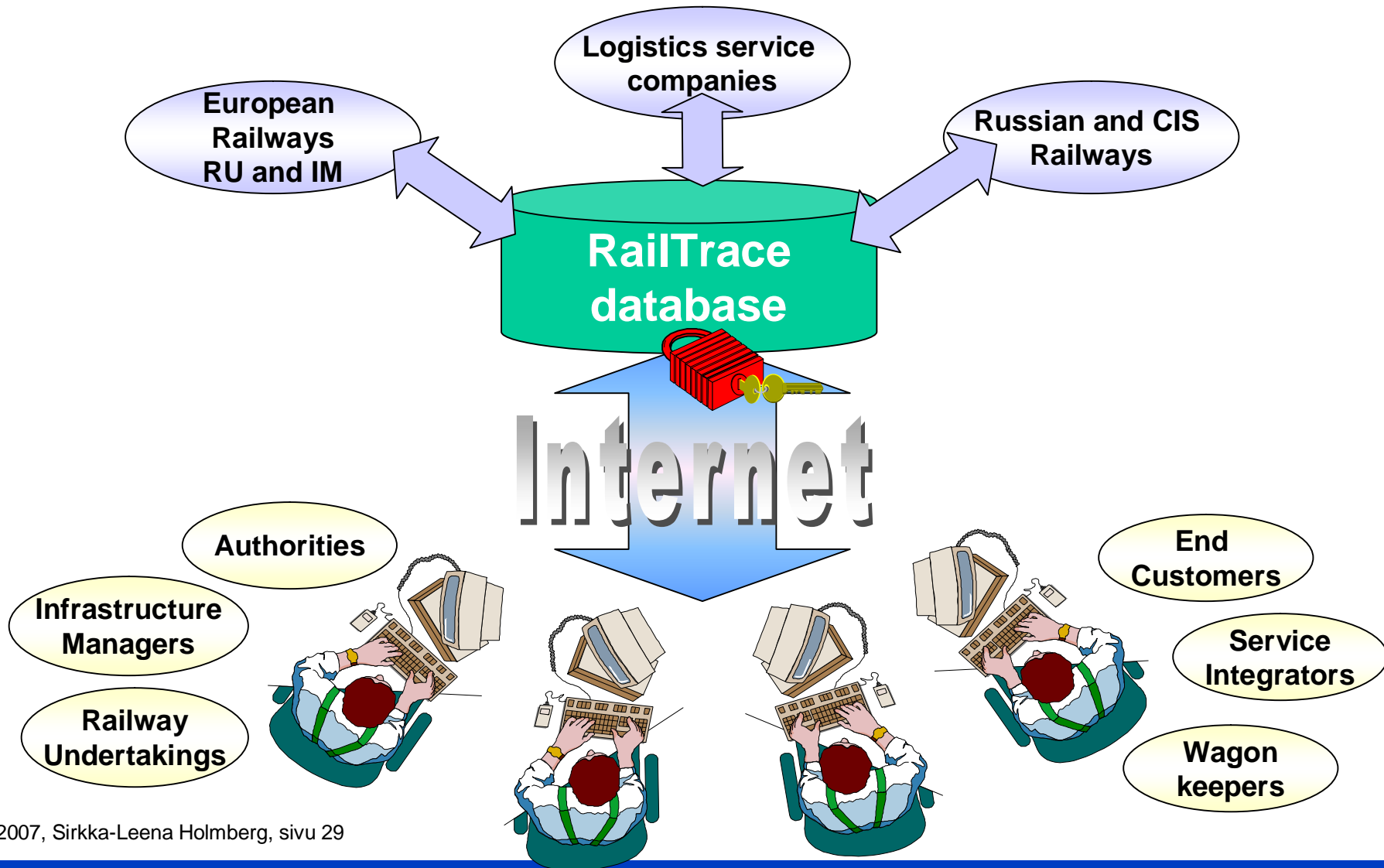


RailTrace service

Primary objectives:

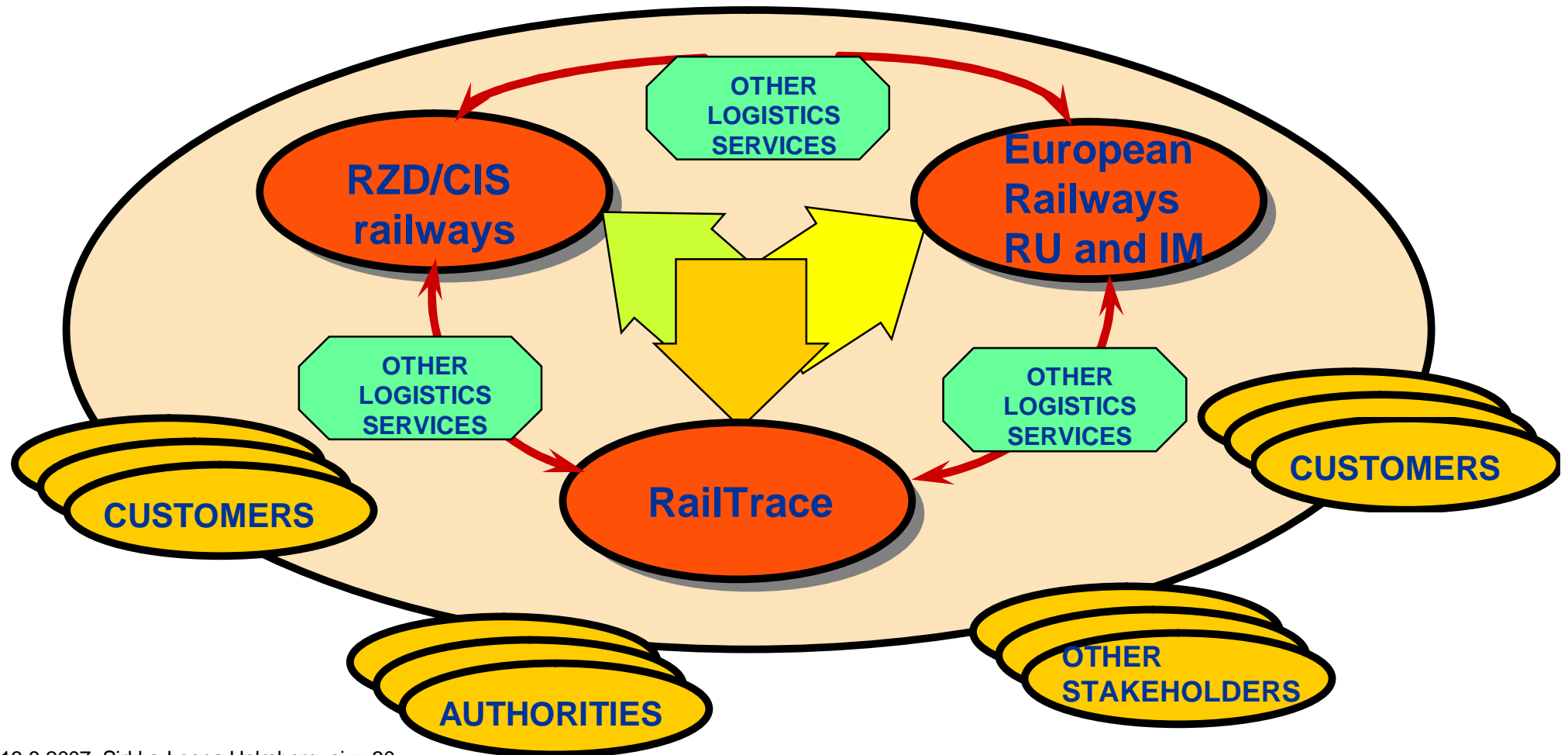
- To give European customers access to international wagon and consignment tracking and tracing covering both Europe and Russia
- To integrate consignment and wagon information
- To calculate ETA
- To report on-line exceptions – delays, lost from the planned transport route
- To have a tool for Finnish Customs to monitor undeclared consignments
- To improve railway's competitiveness

RailTrace - core system



13.8.2007, Sirkka-Leena Holmberg, sivu 29

RailTrace - Virtual Service network



13.8.2007, Sirkka-Leena Holmberg, sivu 30

RailTrace - service

Status

- Coverage – Finland and Russia since June 2007
- Event messages from departure, border crossing, arrival and major marshalling yards in Russia
- Departure, border crossing and arrival events in Finland

Future actions

- Exception reporting from RZD covering the whole transportation chain
- Expansion of status message exchange to other CIS countries and Far East
- Expansion to European countries à latest with the implementation of the TAF TSI regulation

RailTrace - Microsoft Internet Explorer


Tiedosto Muokkaa Näytä Suosikit Työkalut Ohje

Edellinen Etsi Suosikit

Osoite <https://service.vrcargo.fi/RT/railtrace.html> Siirry Linkit

VR CARGO

RAILTRACE



Choose language

Login What is RailTrace?

If button "What is RailTrace?" does not work. [Please try this link!](#)
Jos nappula "What is RailTrace?" ei toimi. [Yritä tätä linkkiä!](#)

www.railtrace.com

Valmis Intranet

Käynnistä 2 I... Saa... esittely 2 M... Micr... Micr... Ado... M O... 100% 12:22

13.8.2007, Sirkka-Leena Holmberg, sivu 32

SUMMARY

The objective is to satisfy customer and stakeholder needs and to reach a flexible co-operation.

Tools are commonly agreed operation models and standards.



**Thank you
for your attention!**

Questions?

