

Key objectives

LogOn Baltic aims at improving spatial integration by transferring knowledge in ICT and logistics competence.

The main objective is to produce and disseminate information for regional development agencies on how to support enterprises in the participating regions in their effort to improve ICT and logistics competence, thus improving regional development.

LogOn Baltic will

- define the role of logistics and ICT competence in regional development
- analyse the ICT, logistics and spatial planning competence in participating regions based on empirical evidence from the business community
- propose actions to improve logistics related information and communication technology applications and to deepen regional networking
- disseminate highly useful results for regional development agencies and other relevant stakeholders in the BSR as well as on EU level
- outline and suggest concrete extension projects



Baltic Sea Region INTERREG III B Neighbourhood Programme

Measure: 2.2. Creating sustainable communication links for improved spatial integration
Community Initiative Programme 2000–2006

Contact:

LogOn Baltic Project Office

Turku School of Economics
Rehtorinpellonkatu 3
FI-20500 TURKU
FINLAND

phone: +358 2 481 481

e-mail: info@logonbaltic.info
www.logonbaltic.info

This publication has been produced with the assistance of the European Union. The contents of this publication is the sole responsibility of the Turku School of Economics and can under no circumstances be regarded as reflecting the position of the European Union.

The content of this publication reflects the author's views. The Investitionsbank Schleswig-Holstein is not liable for any use that may be made of the information contained herein.

LogOnBaltic

Developing
Regions through
Spatial Planning
and Logistics &
ICT Competence
2006–2007



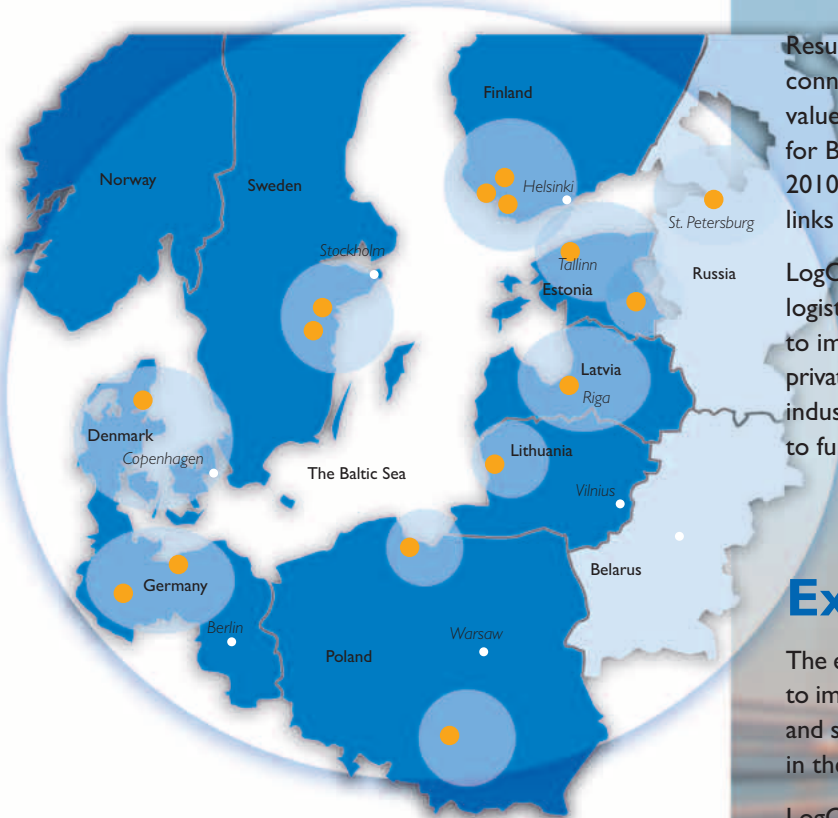
Project part-financed by the European Union
(European Regional Development Fund)
within the BSR INTERREG III B
Neighbourhood Programme



The geographic coverage and partners

The main activities take place in selected sub-regions of the Baltic Sea Region (BSR) and are executed by local responsible bodies under supervision of the LogOn Baltic management.

Dissemination is done locally as well as BSR-wide.



 **LogOnBaltic**

Central objectives and location of activities

- identifying development agencies and evaluating their performance in selected BSR regions,
- evaluating the level of logistics and ICT efficiency
- and suggesting concrete actions for regional and local public sector bodies.

Results are disseminated in local language by skilled and well-connected Partners. LogOn Baltic defines how to produce value added services based on logistics information systems for BSR SMEs. This effort supports the e-Europe Challenges 2010 improving the exploitation of ICT by businesses, and links to Northern Dimension Action Plan.

LogOn Baltic provides an overview of logistics efficiency and logistics information systems and their exploitation in order to improve the interaction between SMEs and other public/private actors. The identification of logistics interfaces between industry, commerce, services and authorities will contribute to further integration of the BSR.

Expected outcome

The expected outcome of LogOn Baltic is to present solutions to improve the interplay between logistics & ICT competence and spatial planning thus strengthening SMEs competitiveness in the BSR.

LogOn Baltic offers a unique opportunity to deepen the BSR network by providing vital results for transnational co-operation and improving operational conditions of SME's in the BSR.

Overall coordination and management

Cross-sectorality of Partners is manifested in

- complementary composition of Partners;
- direct involvement of business stakeholders, and
- some of the best applied research expertise in BSR in this field.

All Partners are experienced in international projects.

LogOn Baltic – Management Structure

Developing Regions through Spatial Planning and Logistics & ICT Competence

LogOn Baltic Partners

WP1 Leader	WP2 Leader	WP3 Leader	WP4 Leader
Wismar University	Linköping University	Hamburg School of Logistics	Turku School of Economics
Context of regional development and spatial planning in view of ICT and logistics	Logistics and ICT competence in the participating regions	Advancing regional development through ICT and logistics competence	Dissemination and transfer
(WP1)	(WP2)	(WP3)	(WP4)

LogOn Baltic Lead Partner
Turku School of Economics

Investitionsbank Schleswig-Holstein
BSR INTERREG III B Joint Secretariat