



ST. PETERSBURG CITY GOVERNMENT

DEVELOPMENT OF TRANSPORT SYSTEM OF ST. PETERSBURG



ALEXEY LVOV

Committee
for Transport and Transit Policy



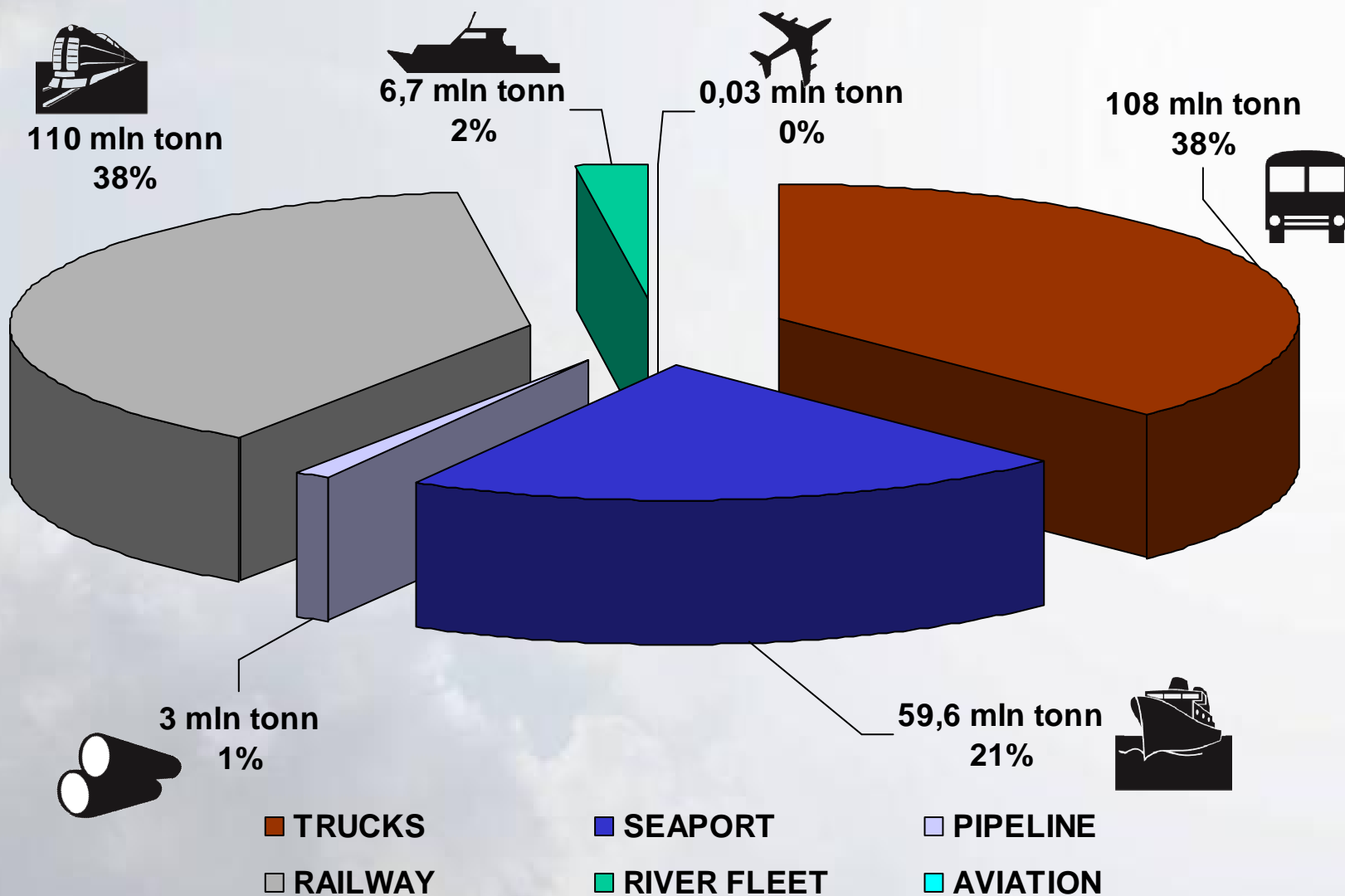
ST.PETERSBURG IS THE GATE TO RUSSIA



20%
OF FOREIGN
TRADE OF
RUSSIA



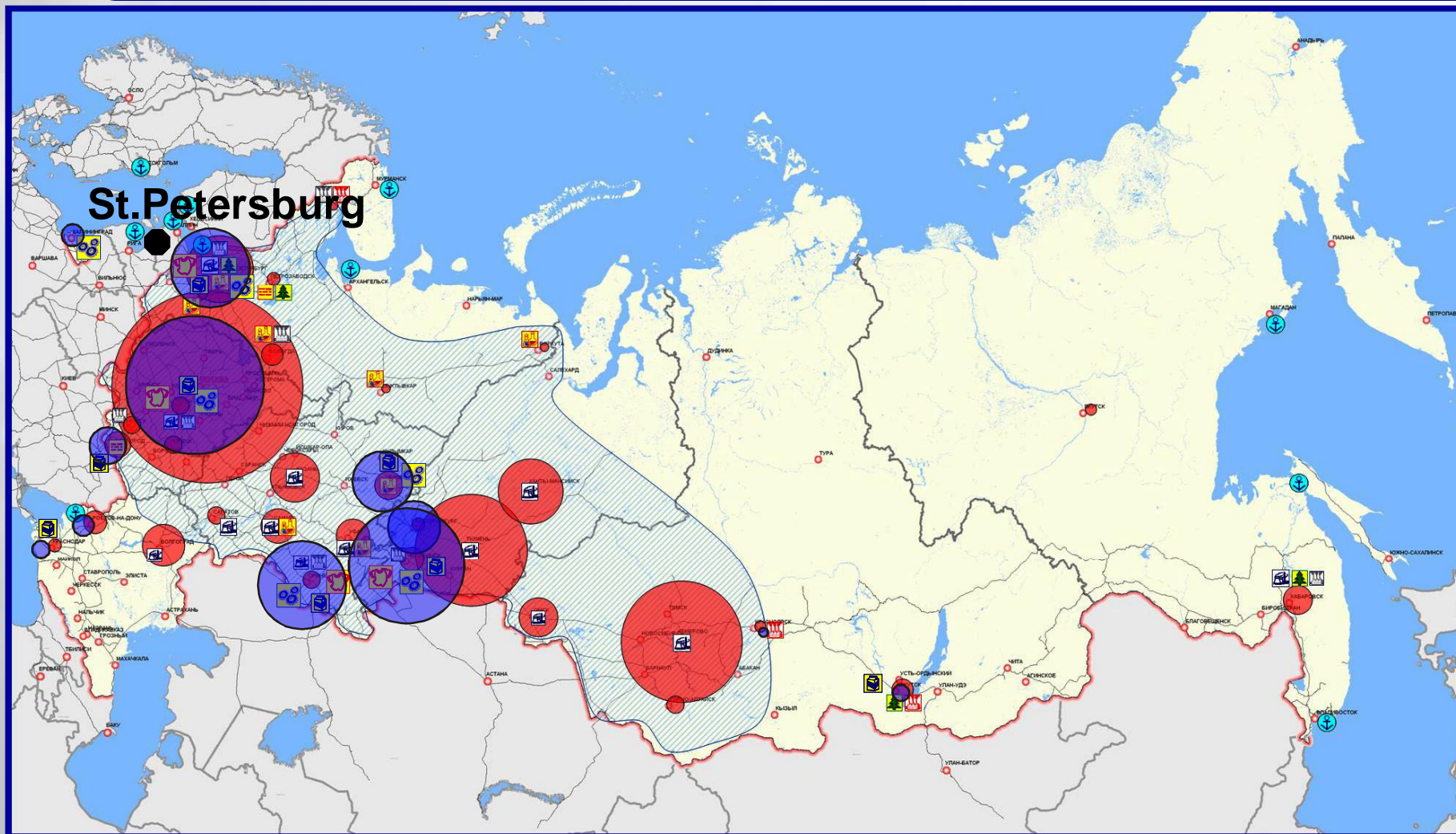
ST. PETERSBURG CARGO TURNOVER



TOTAL TURNOVER more than 287 mln tonn



INFLUENCE OF ST. PETERSBURG TRANSPORT SYSTEM



INFLUENCE ZONE OF ST. PETERSBURG TRANSPORT SYSTEM



MAIN EXPORT CENTERS



MAIN IMPORT CENTERS



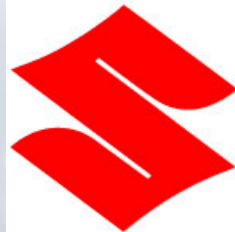
THE ARRANGEMENT OF NEW INDUSTRIES



TOYOTA



GM



SUZUKI

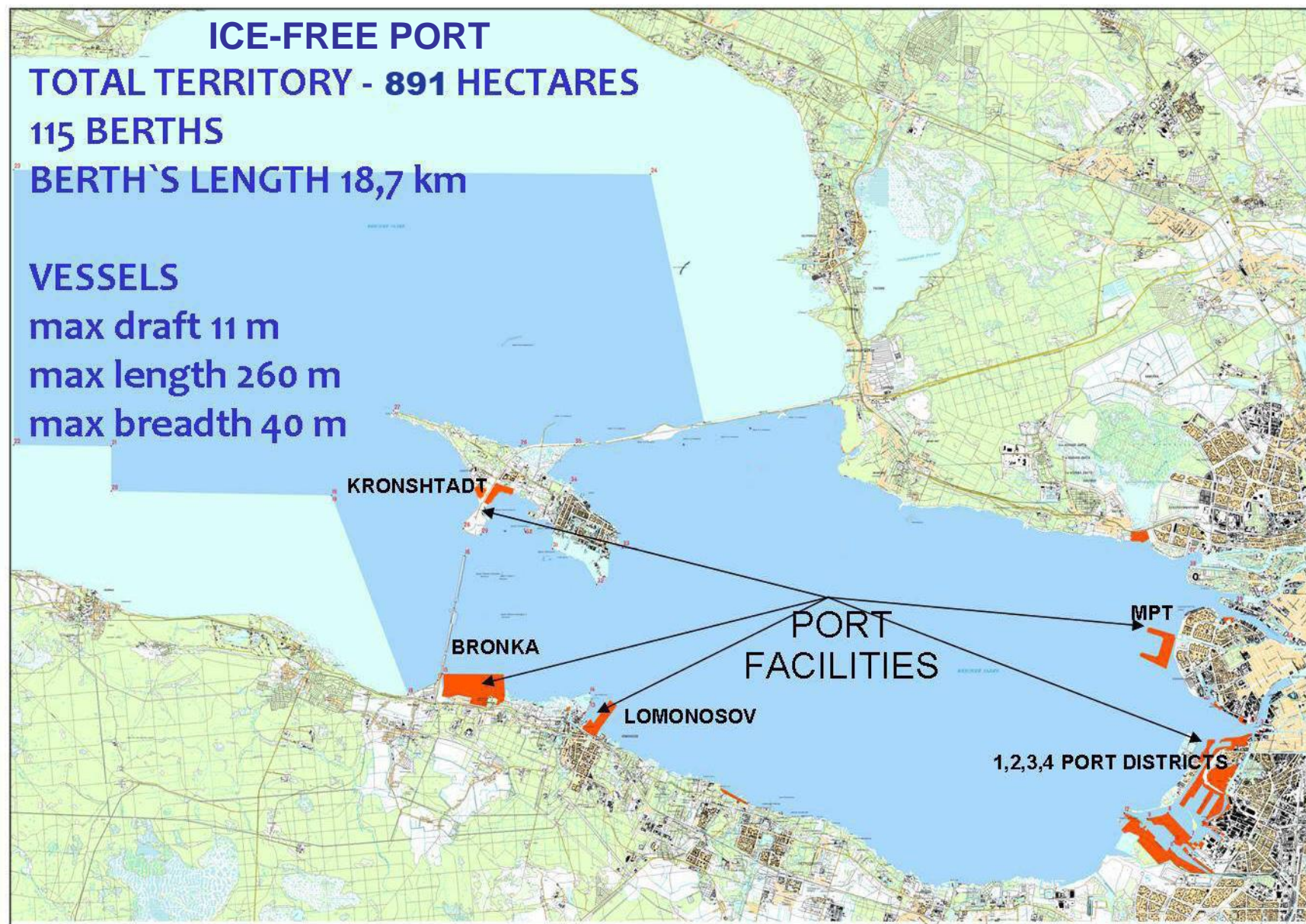


HYUNDAI



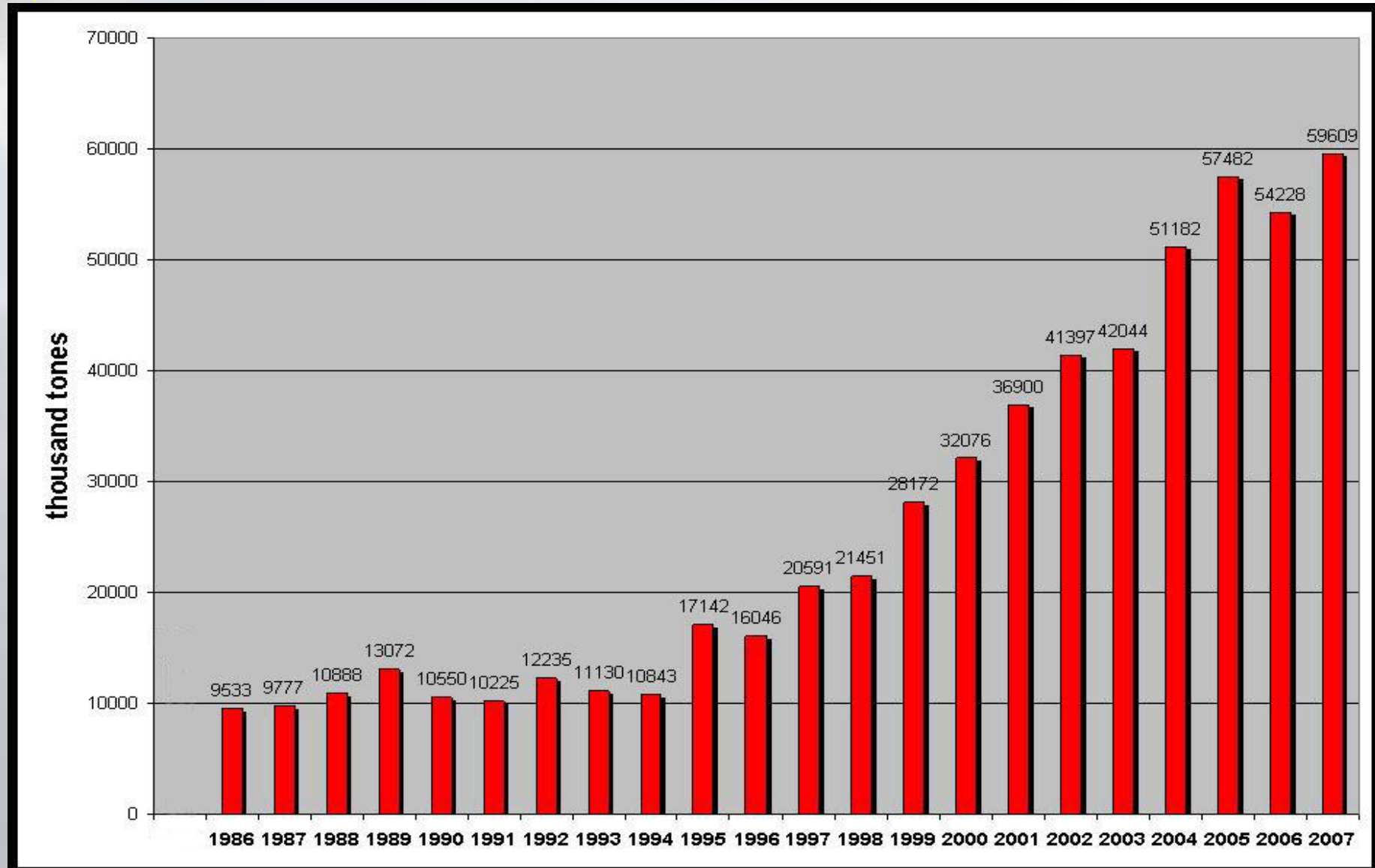


PARAMETERS OF PORT OF ST. PETERSBURG





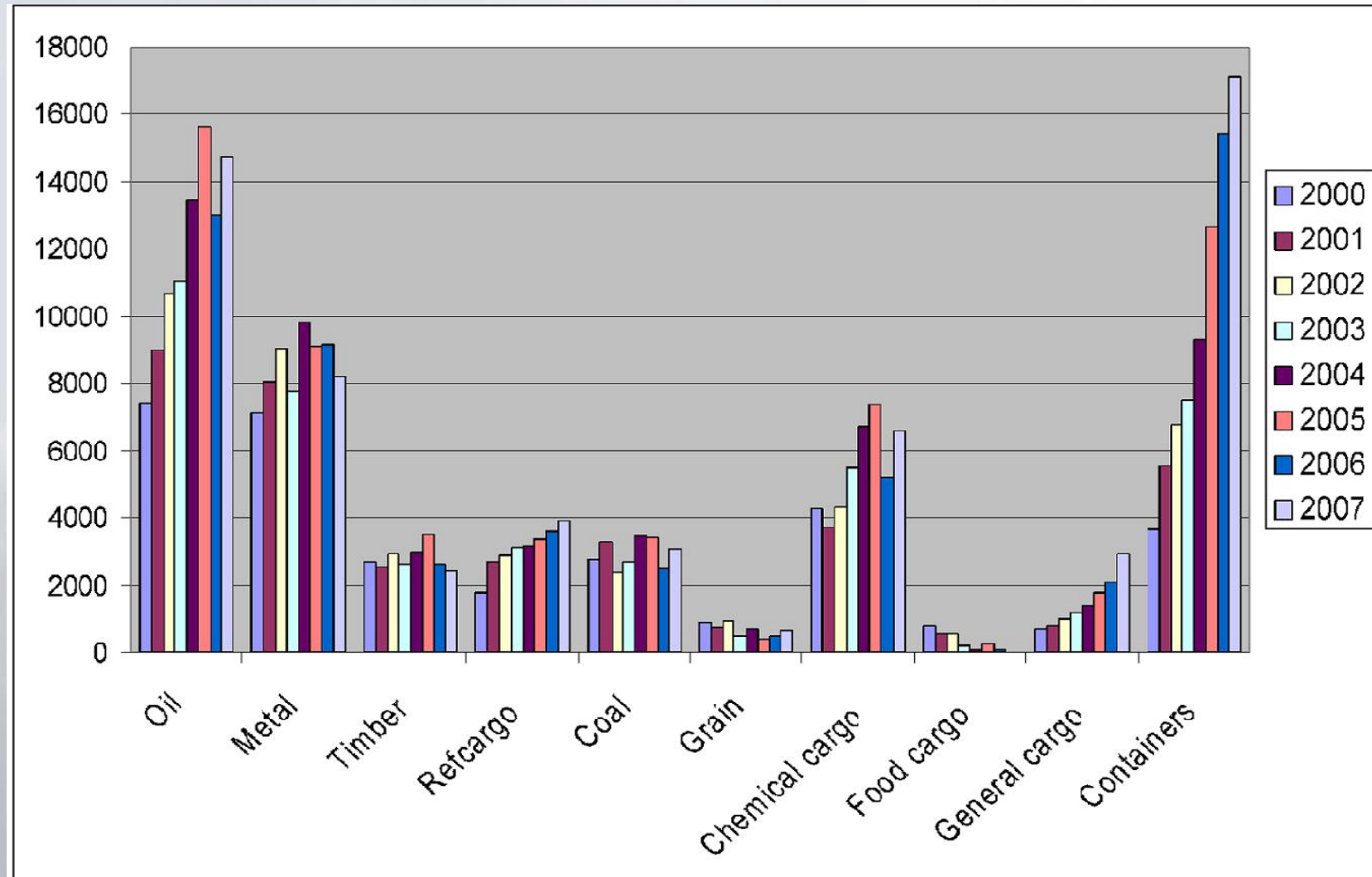
TURNOVER OF PORT OF ST. PETERSBURG





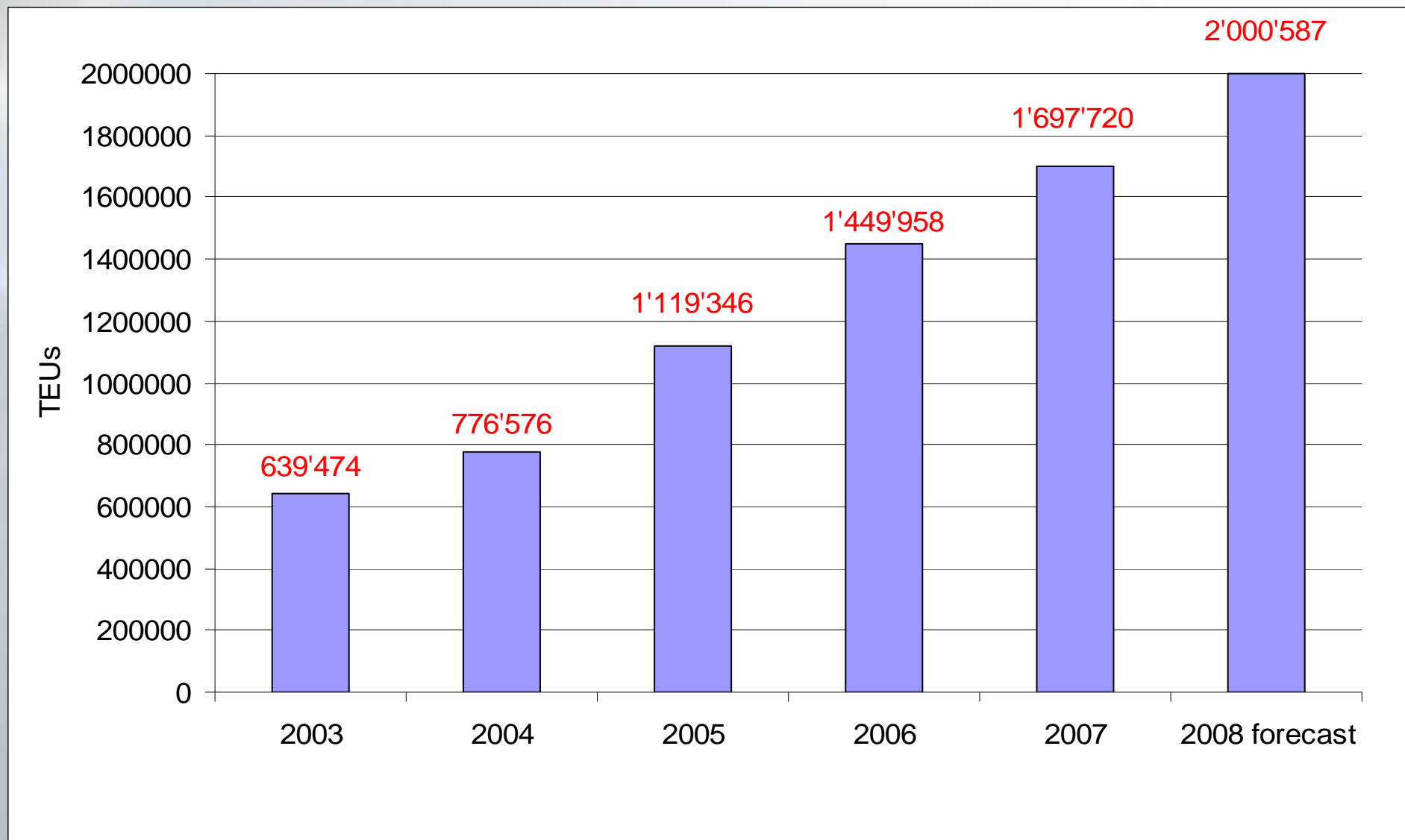
THE DYNAMICS OF DIFFERENT CARGOS

thousand tones



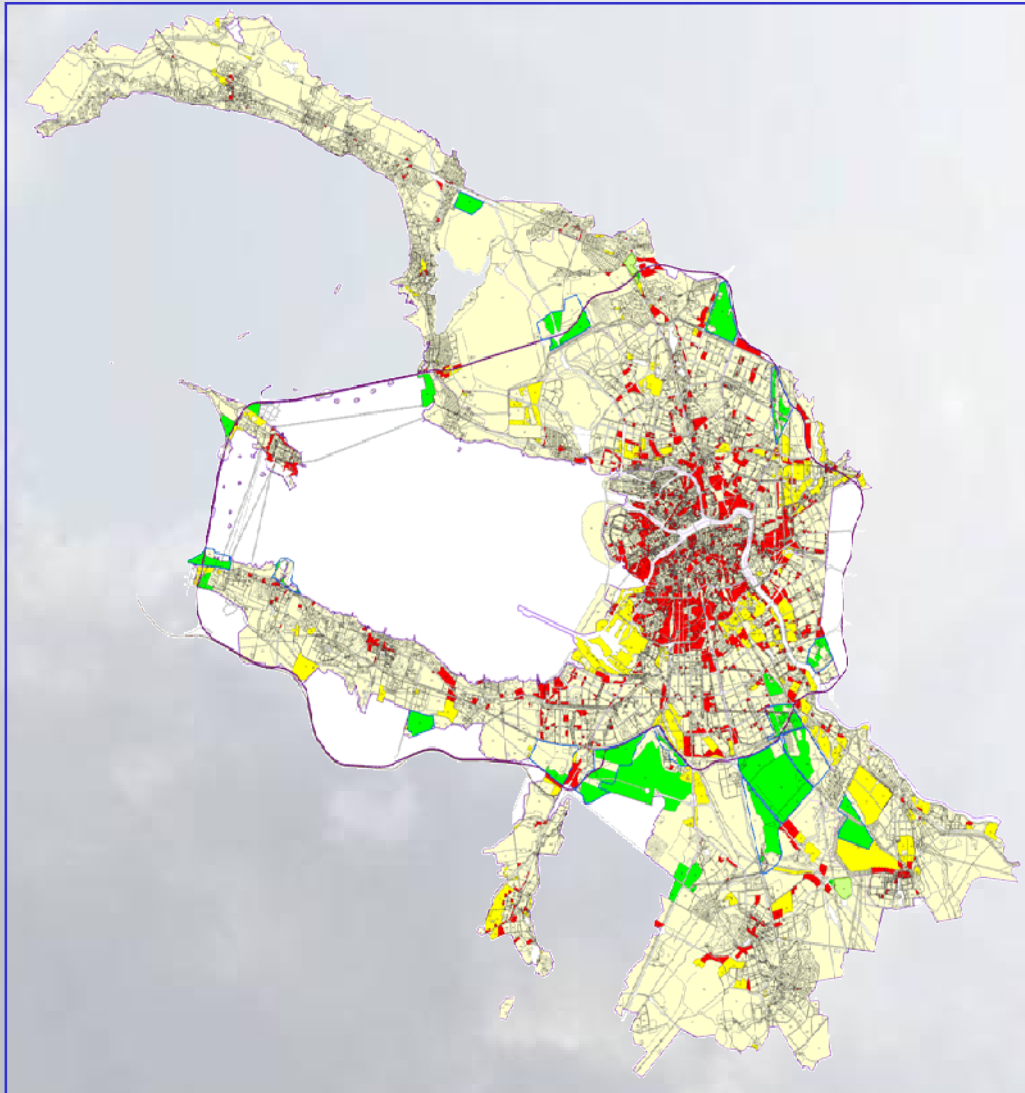


CONTAINER TURNOVER OF THE PORT





DEVELOPMENT OF TERMINALS AND WAREHOUSE INFRASTRUCTURE IN ST. PETERSBURG



**Scheme of Development of Terminals
and Warehouse Infrastructure
in St. Petersburg**

-  territories where terminals and warehouses infrastructure development is not recommended
-  territories where new terminals and warehouses construction must be limited
-  territories where new terminals and warehouses infrastructure may be developed

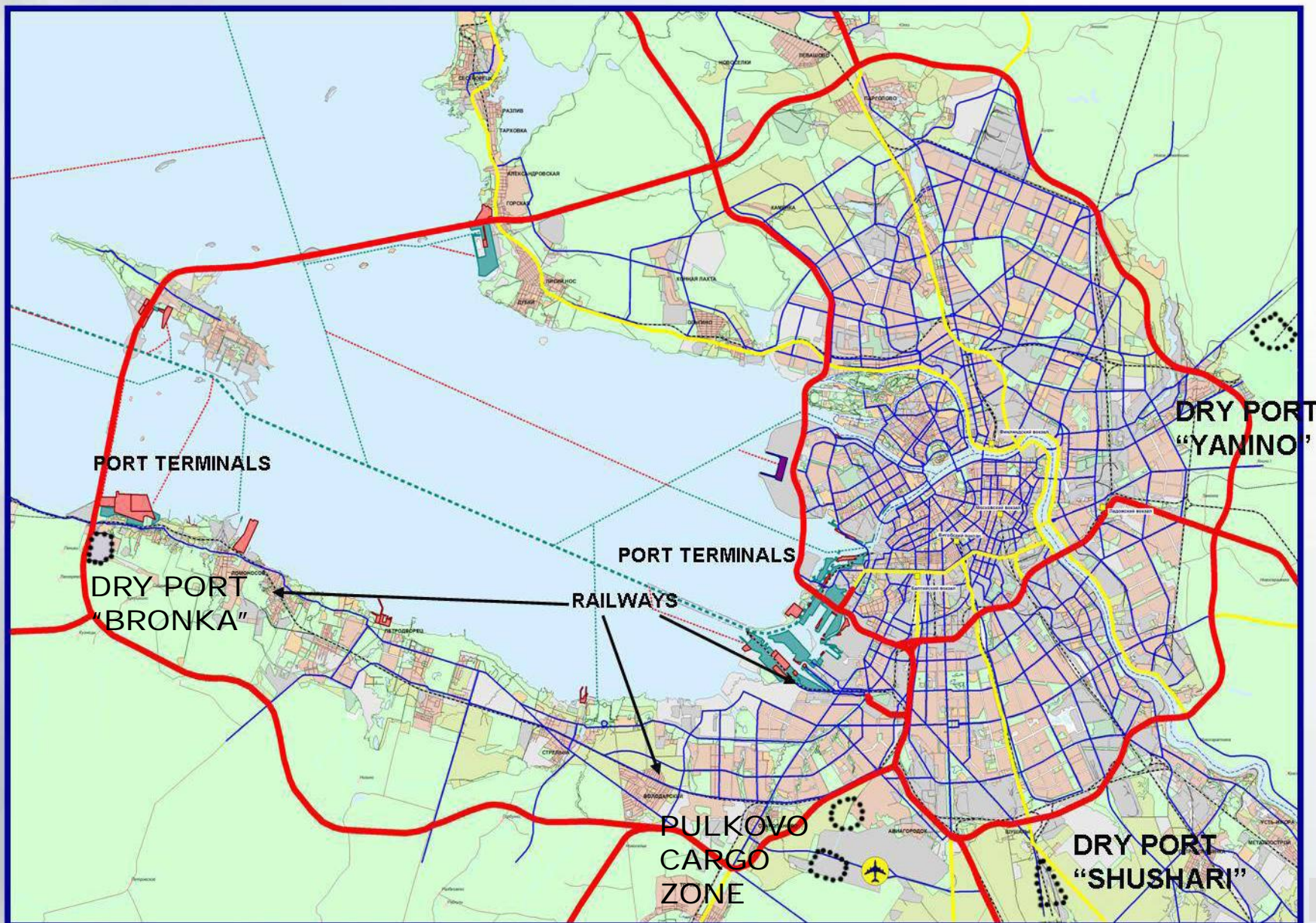


TARGET INDICATORS OF THE TERMINALS AND WAREHOUSE INFRASTRUCTURE DEVELOPMENT PROJECT

Indicators	Measureme nt Unit	Actual Indicator s	Target Indicators		
		2005	2010	2015	2025
Number of Logistics Villages	No.	1	2-3	3-4	5-6
Area of Roofed in Warehouses	thou. of m²	5 250,0	6 410,0	7 260,0	8 240,0
Within the Freeway Zone	thou. of m²	5 076,0	5 176,0	4 750,0	2 550,0
In the Vicinity of Freeway an Beyond	thou. of m²	174,0	1 234,0	2 410,0	5 690,0
Area of Port Terminal	Hectares	240,2	318,4	418,0	564,8
Area of Inland Terminal Facilities	Hectares	66,0	98,8	138,5	199,5
Area of Regional Distribution Centers	thou. of m²	564,6	704,6	937,9	2 580,9

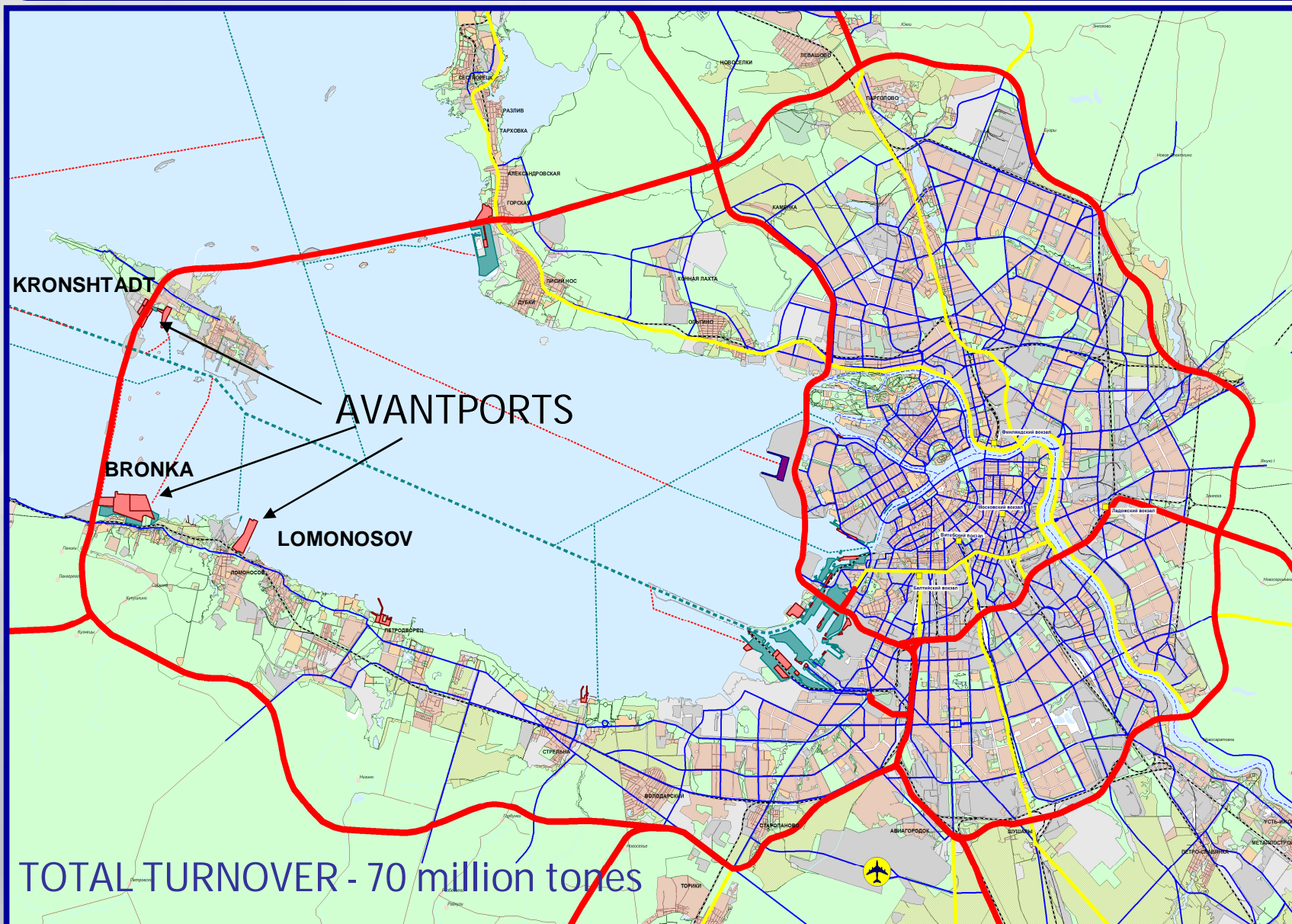


“DRY PORTS” DEVELOPMENT





AVANTPORTS OF PORT OF ST. PETERSBURG





INVESTMENT PROGRAMS OF STEVEDORING COMPANIES





TOURISM IN ST. PETERSBURG

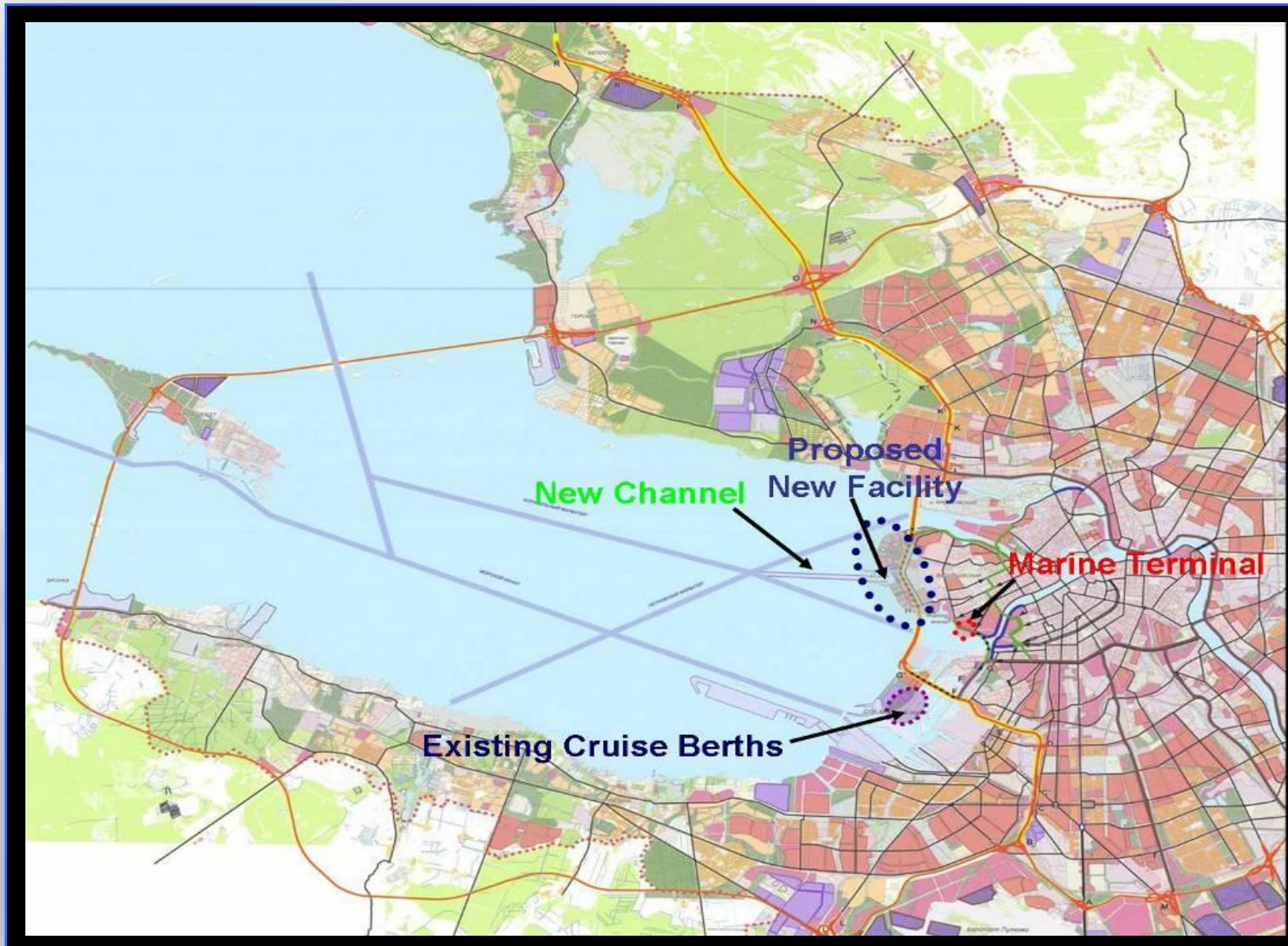


St. Petersburg is one of the most attractive tourism centres and the only city in Russia rated by UNESCO among first 10 most attractive cities in the world.

In 2007, the city was visited by over 4.5 million of tourists including 0.3 million – by maritime transport.



NEW MARINE FACILITY IN ST. PETERSBURG





NEW MARINE PASSENGER TERMINAL

440 hectares
of newly
reclaimed
territories



cruise and ferry vessels with a length up to 311 m and
a draft of up to 9 m



1 million
passengers

7 berths

length of the
berths - 2108 m



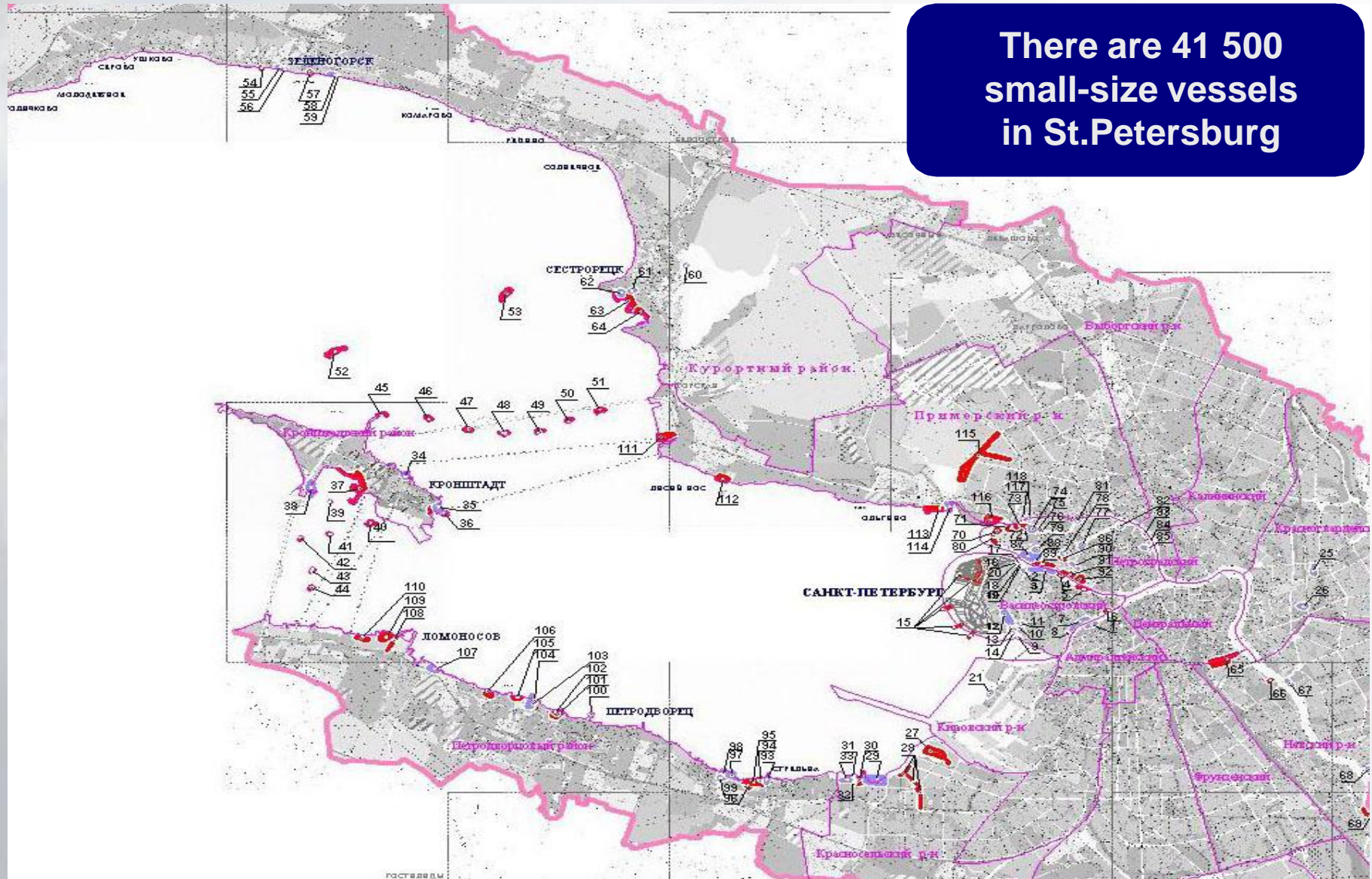
OPENING OF NEW MARINE PASSENGER TERMINAL - 10.09.2008







There are 41 500 small-size vessels in St.Petersburg



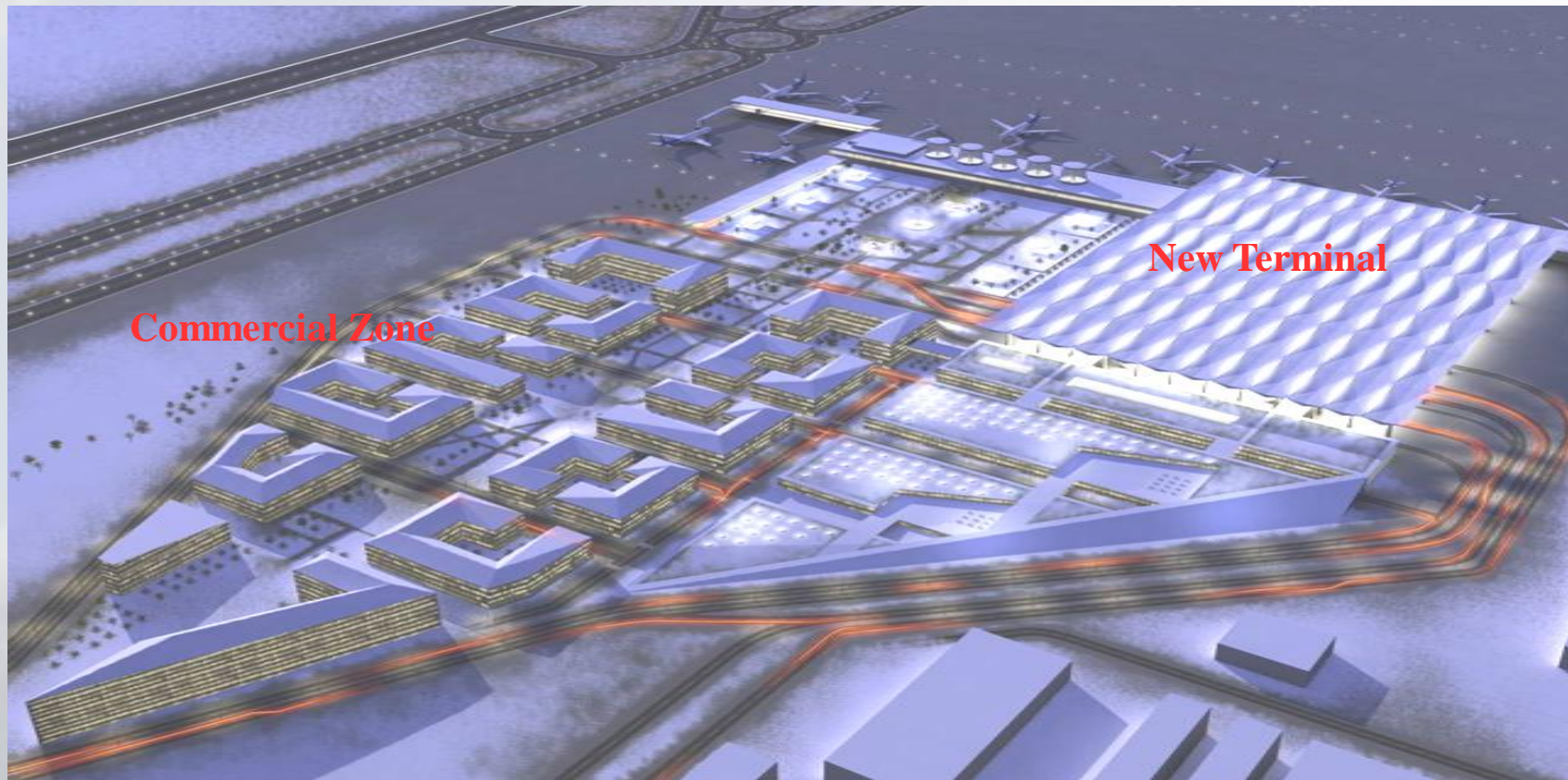


PULKOVO AIRPORT





GRIMSHAW PROJECT: AIRPORT CITY



Four world-known architectural companies were invited to develop a new terminal and an urban plan for airport city: GMP, Grimshaw, SOM and Z&K
After two stages, the project of Grimshaw&Partners LTD won the competition

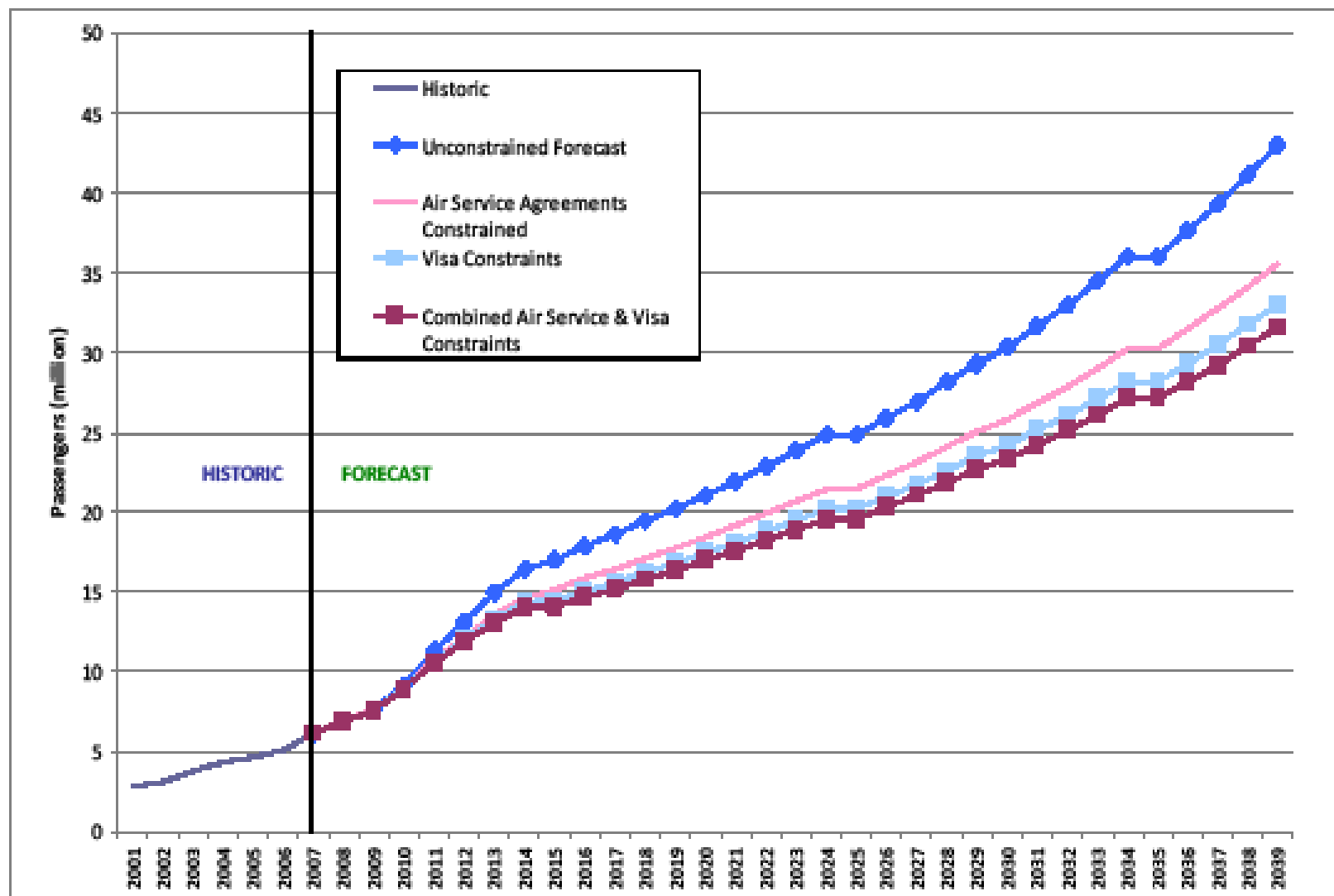


GRIMSHAW PROJECT



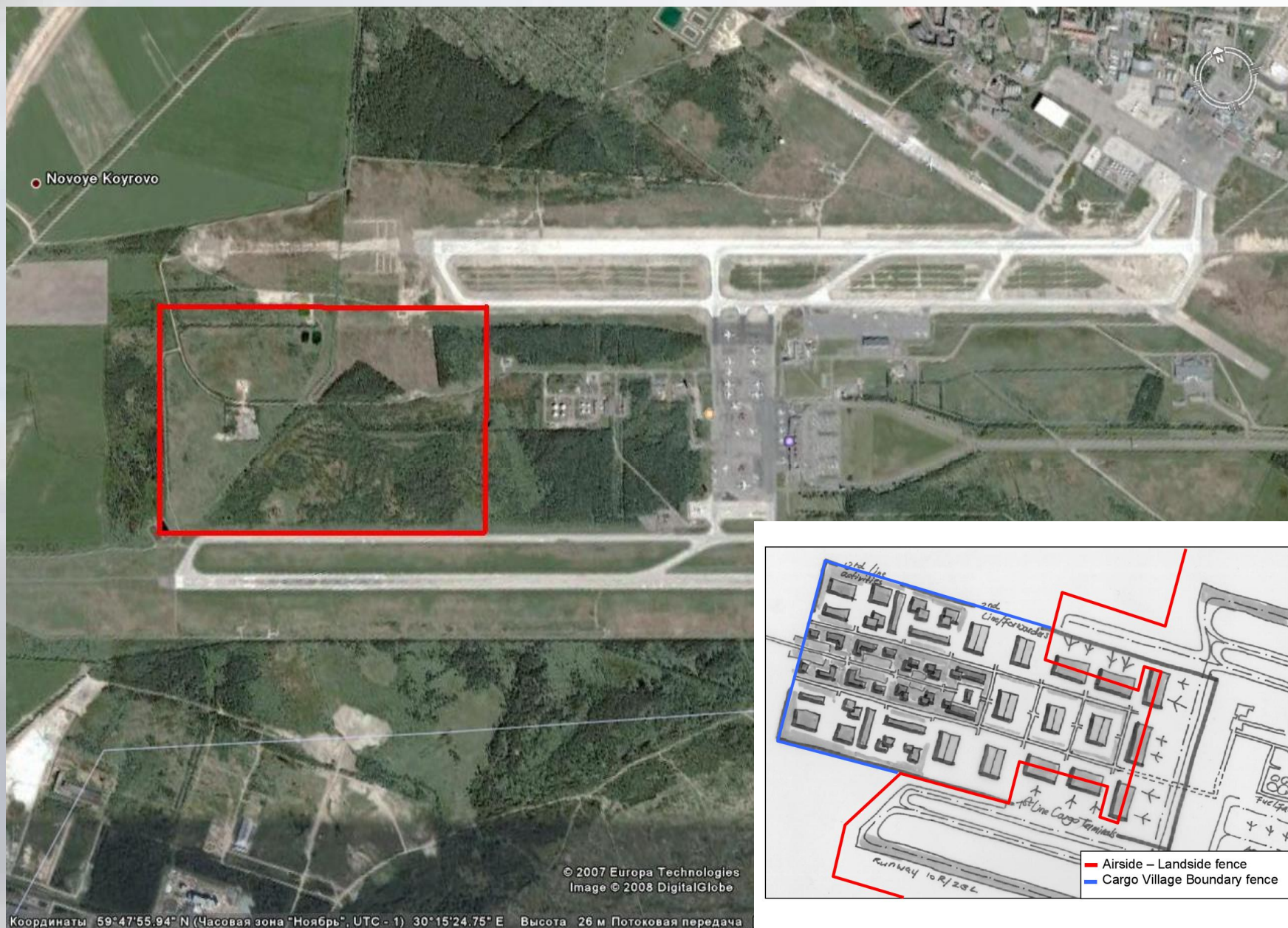


AIRPORT PULKOVO – PASSENGER FORECAST



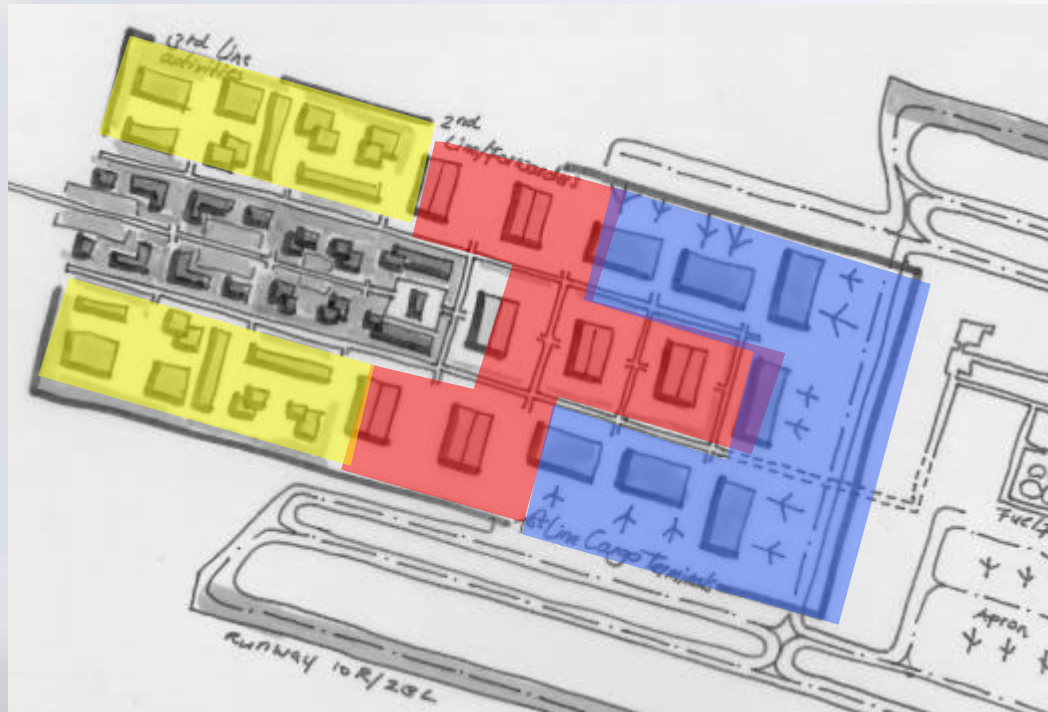


PULKOVO AIR-CARGO ZONE LOCATION





NACO CONCEPT OF AIR-CARGO ZONE



- 1st line cargo
- 2nd line cargo
- 3rd line cargo

1st line facilities

The main characteristic facility in this category is the cargo terminal.

2nd line facilities

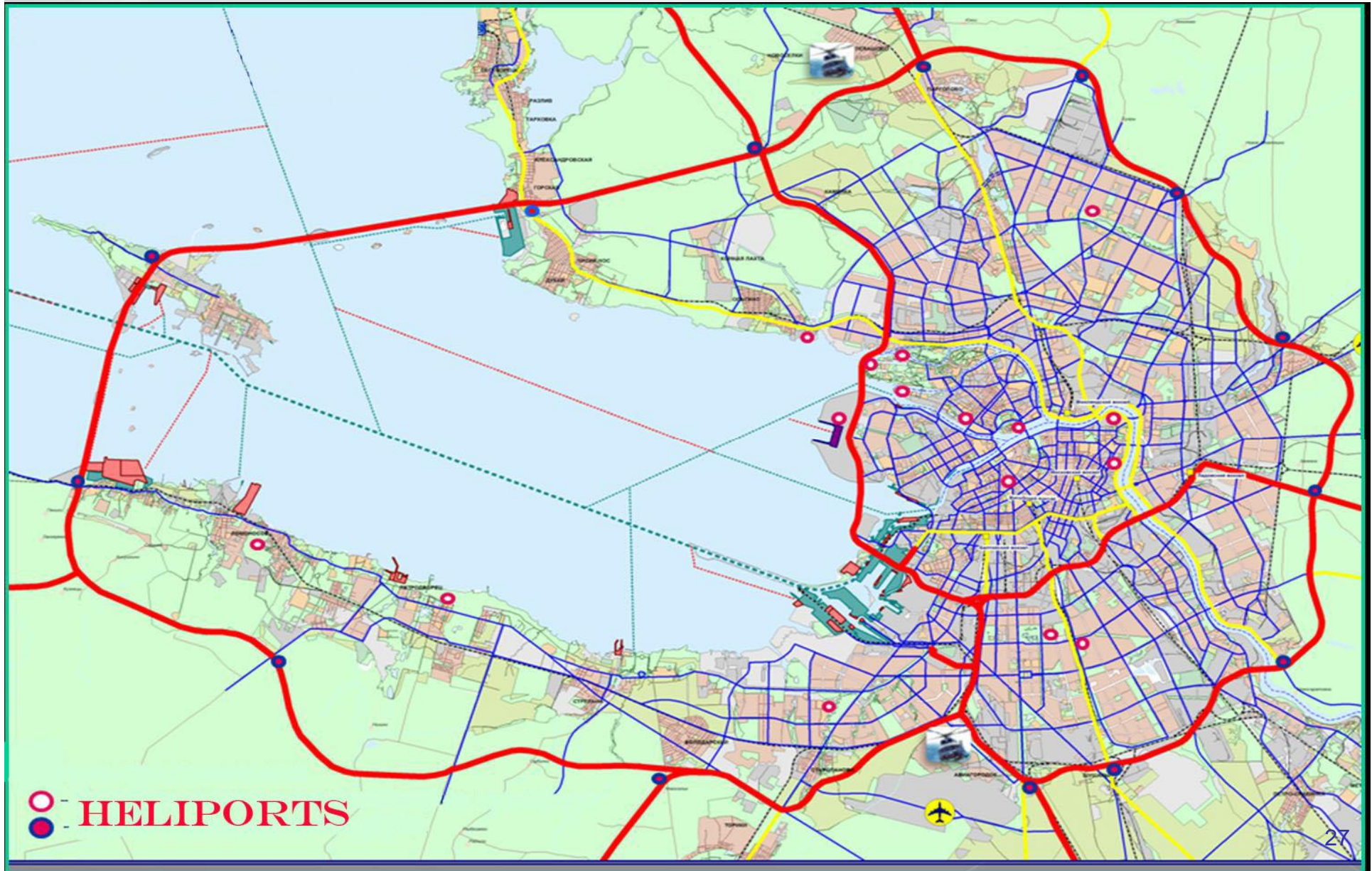
The 2nd line cargo facilities mainly consist of forwarder facilities.

3rd line facilities

In the area reserved for 3rd line facilities the vendor hubs and the conventional distribution centers.



CREATING HELICOPTER PAD SYSTEM IN ST.PETERSBURG





FOR CONTACTS

ALEXEY LVOV

**ST. PETERSBURG CITY GOVERNMENT
COMMITTEE FOR TRANSPORT AND TRANSIT POLICY**

www.transport.spb.ru

phone: +7 812 576 28 51

fax: +7 812 310 05 05

LVOV@CTTP.GOV.SPB.RU

**THANK YOU FOR YOUR
ATTENTION!**