



DISSEMINATION OF STATE-OF-THE-ART TECHNOLOGIES



EUROPEAN
REGIONAL
DEVELOPMENT
FUND

www.pagd.lrv.lt



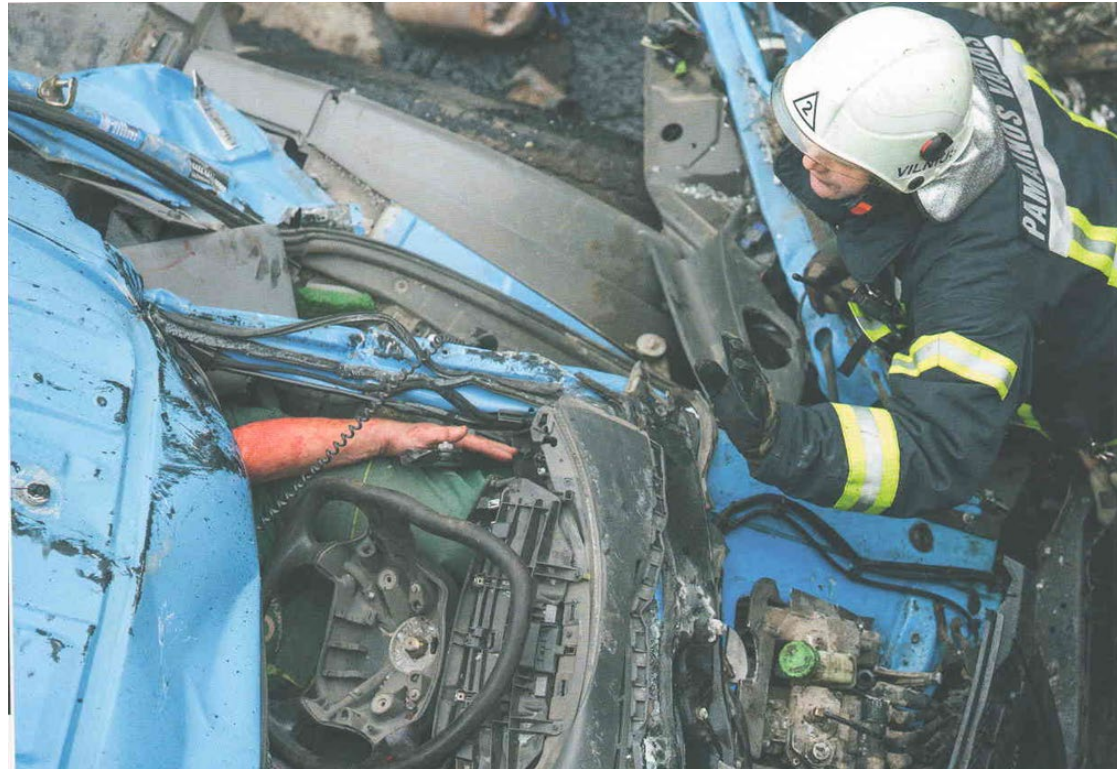
BASIC FACTS ABOUT LITHUANIA



- Surface:
65.300 thousand km²
Border - 1731 km
- Total Population -
~ 3 million
- Administr. division:
10 counties,
60 municipalities
- Capital: Vilnius -
~ 560 000 inhabitants
- Neighbour states:
Latvia
Belarus
Poland
Russia (Kaliningrad)



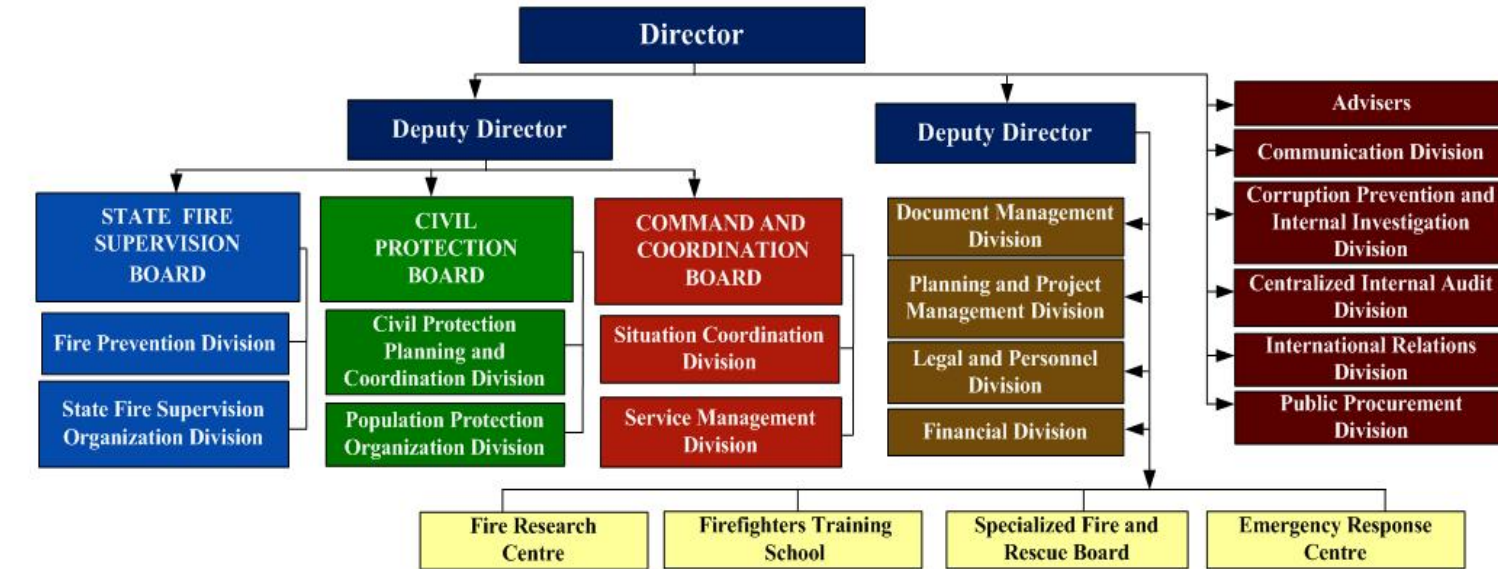
MISSION OF STATE FIRE AND RESCUE SERVICE



Protect people, property and environment in case of emergencies, to organise and perform prevention and management of fires and other emergencies



THE STRUCTURE OF THE FIRE AND RESCUE DEPARTMENT UNDER THE MINISTRY
OF THE REPUBLIC OF LITHUANIA AND ITS SUBORDINATE BODIES



Counties Fire and Rescue Boards
and subordinate Fire and Rescue Services

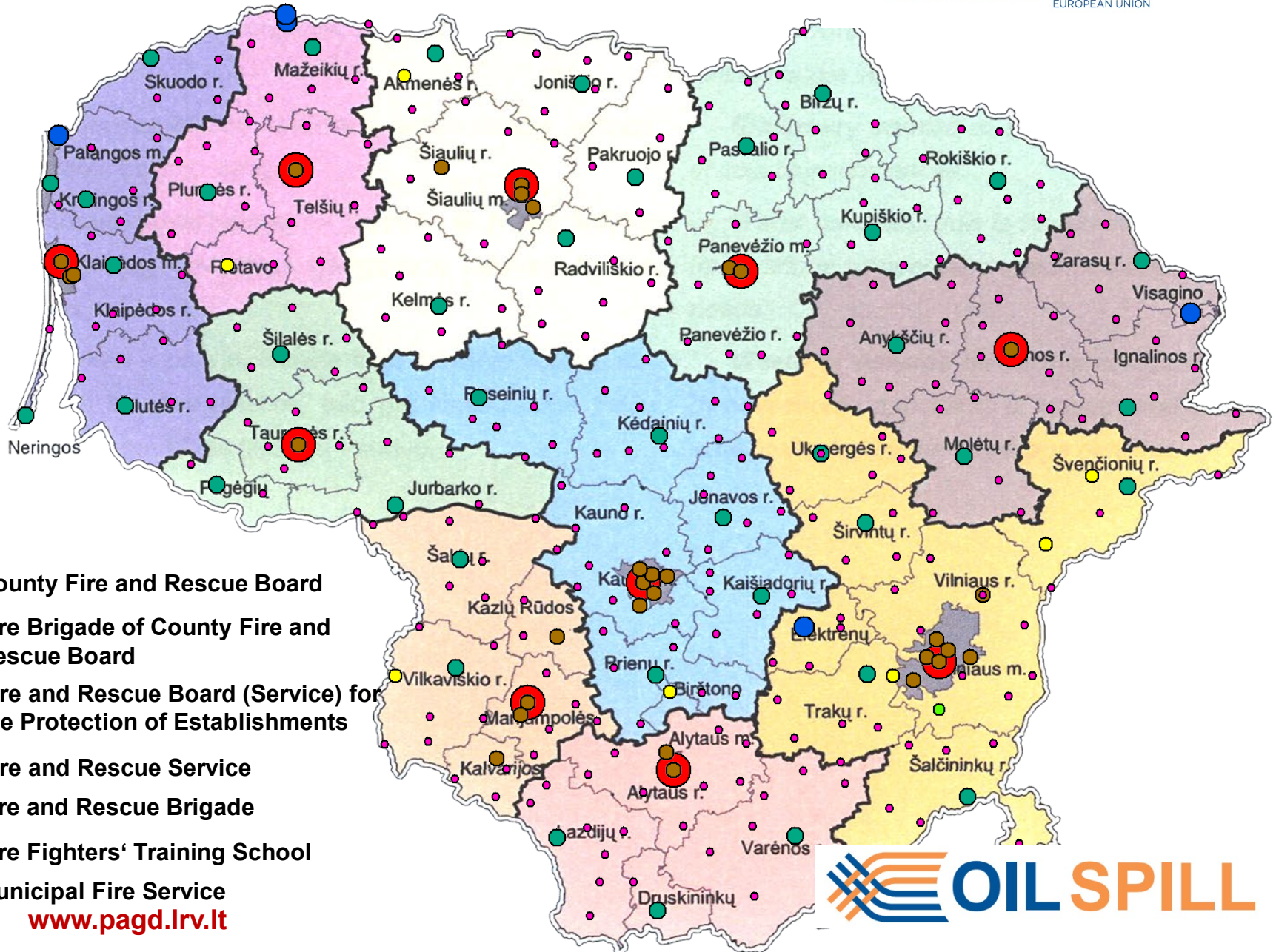




FIRE AND RESCUE F



EUROPEAN REGIONAL DEVELOPMENT FUND



www.pagd.lrv.lt





PERSONNEL

4693 positions in the State Fire and Rescue Service

3908 officers of inner service

340 public servants

445 contract employees





PREPAREDNESS

State Fire and Rescue Service units are situated in the centres of municipalities and strategic establishments

- service in units is organised in 4 shifts, each operating for 24 hours
- around 700 State Fire and Rescue Service officers are on duty 24/7



Fire engines in use

229 fire trucks with water tanks

52 self-elevating platforms and ladders

350 other special rescue vehicles



EMERGENCY RESPONSE CENTRE

112 number operates in Lithuania in all telephone communication networks



- 3 Regional 112 emergency call and dispatch centres in Vilnius, Klaipėda and Alytus (only dispatch);

- 234 officers work in shifts



INTERNATIONAL ASSISTANCE

Lithuanian Emergency Response Team (LERT) was formed in 2005

LERT was officially globally **recognised by United Nations**
as 23rd Medium-Urban Search and Rescue team in the World

In 2009 Lithuanian, Estonian and Latvian Fire and Rescue Services
established a multinational high capacity pumping module **BaltFloodCombat**

In 2015 Lithuania and Latvian Fire and Rescue Services established a
Latvian Lithuanian Technical Assistance Support Team (**LL-Tast**)





Latvia – Lithuania projects

LLIV-247 Environmental accidents elimination in the Baltic Sea coastal area



2012.03.01 – 2013.08.31 6 years ago

www.pagd.lrv.lt





Latvia – Lithuania projects

Threats



The Butinge Terminal

The complex of the Butinge Terminal consists of a crude oil pipeline, which connects the facility with the Mazeikiai Refinery, onshore terminal equipment and tanks at Butinge, offshore pipeline. The Terminal can export up to 14 million tons of crude oil a year.



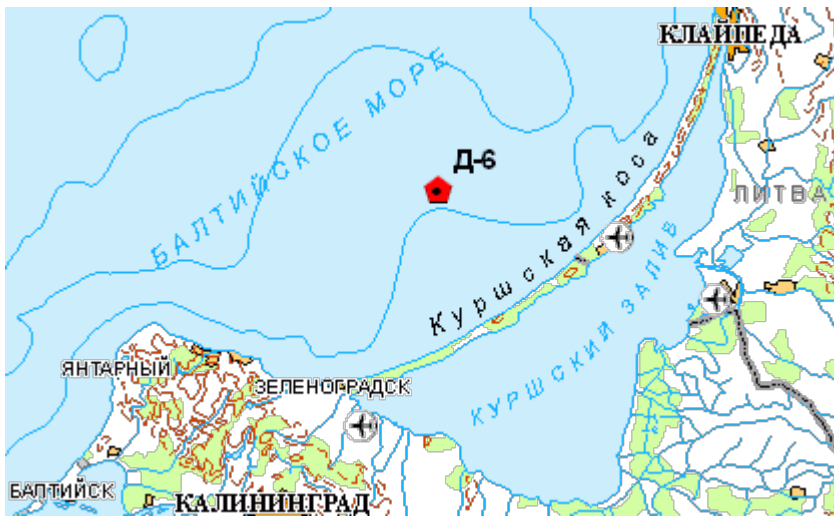
www.pagd.lrv.lt





Latvia – Lithuania projects

Threats



Kravtsovskoye (D-6) oil field. New fields in the Baltic Sea were discovered as a result of active exploration activities in 2015, opening new prospects for the region’s development. Subsoil use licenses were obtained for the D33, D29, D41, and D6-South fields in 2016.



Latvia
Lithuania
cross border
cooperation programme
2007 - 2013



part financed by
European Regional
Development Fund

bringing neighbours closer



Latvia – Lithuania projects



Threats



Latvia
Lithuania
cross border
cooperation programme
2007 - 2013



part financed by
European Regional
Development Fund

bringing neighbours closer

www.pagd.lrv.lt

24th of December 2017 "Ocean Crown" due to engine failure and broken anchor was thrown on the shoal 200 meters from the shore. The hull was not damaged. There were 1173,9 t. crude oil and 112.5 t. diesel and 20 t. other oil.





Latvia – Lithuania projects



The main goal was to learn work together




Latvia
Lithuania
cross border
cooperation programme
2007 - 2013



part financed by
European Regional
Development Fund

bringing neighbours closer

www.pagd.lrv.lt





Latvia – Lithuania projects and to change the equipment



Latvia
Lithuania
cross border
cooperation programme
2007 - 2013



part financed by
European Regional
Development Fund

bringing neighbours closer

www.pagd.lrv.lt





Latvia – Lithuania projects and to change the equipment



Latvia
Lithuania
cross border
cooperation programme
2007 - 2013



part financed by
European Regional
Development Fund

bringing neighbours closer
www.pagd.lrv.it





Latvia – Lithuania projects

Large scale exercise



Latvia
Lithuania

cross border
cooperation programme
2007 - 2013



part financed by
European Regional
Development Fund

bringing neighbours closer
www.pagd.lrv.it





Latvia – Lithuania projects

LLI-267 Introducing new technologies in near border emergency combat



Interreg

Latvija-Lietuva

European Regional Development Fund



2018.06.01 – 2020.05.31



Latvia – Lithuania projects



Objectives:

- Increase environmental safety in cross-border regions of Latvia and Lithuania.
- Improve possibilities of firefighters and rescuers to tackle disasters by introducing new technologies
- Improve emergency cooperation of near border fire and rescue services



Interreg

Latvija-Lietuva

European Regional Development Fund



EUROPEAN UNION

www.pagd.lrv.lt





Latvia – Lithuania projects

The main equipment:



6 drones with regular cameras



3 drones with thermal cameras

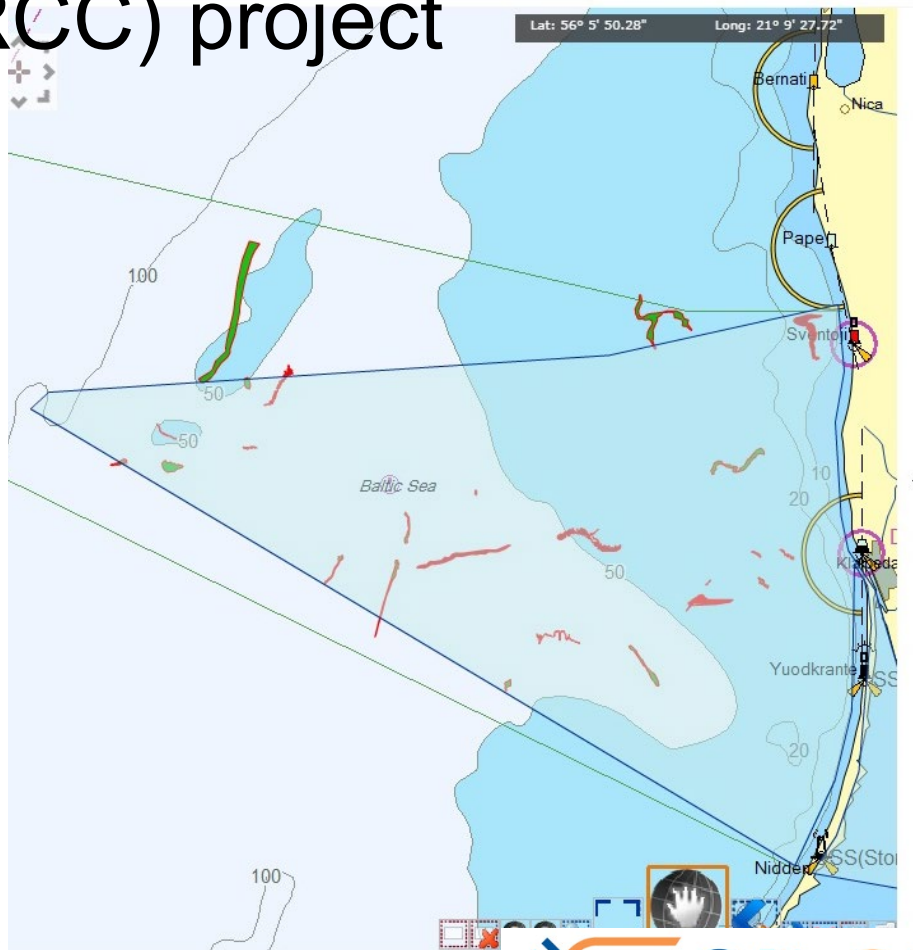
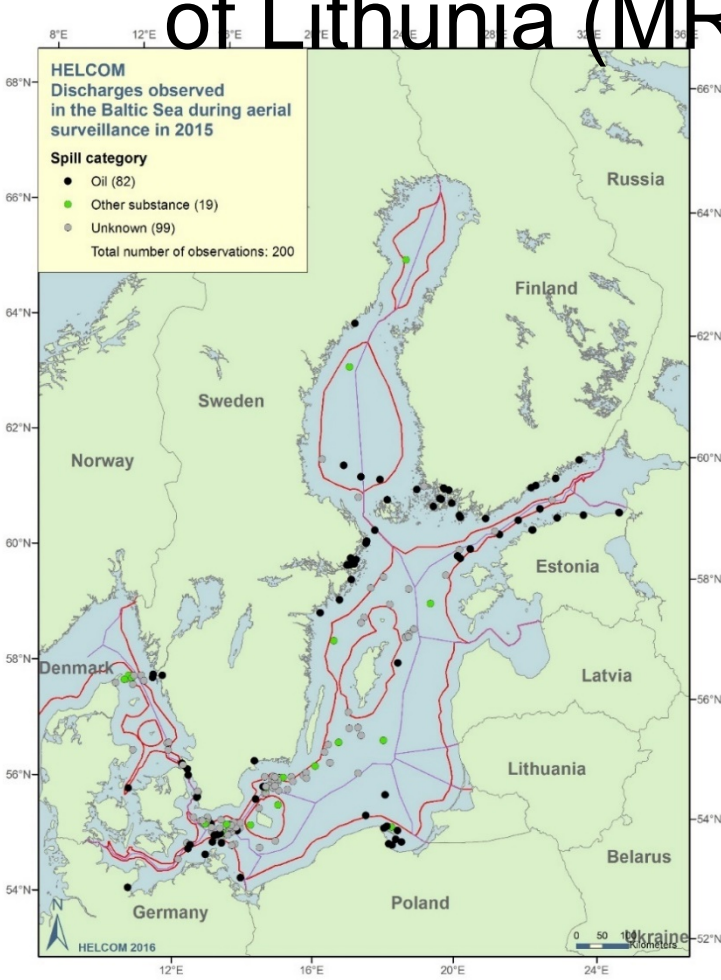


1 drone 3D mapping function (universal)



Latvia – Lithuania projects

Maritime Rescue Coordination Centre of Lithuania (MRCC) project





Latvia – Lithuania projects

Maritime Rescue Coordination Centre of Lithuania (MRCC) project





Combined projects

 **Interreg**
Baltic Sea Region





Combined projects

Interreg
Baltic Sea Region



EUROPEAN
REGIONAL
DEVELOPMENT
FUND



LIUVOS
RAUDONASIS KRYŽIUS



THANK YOU!

Fire and Rescue Department under the Ministry of the Interior
of the Republic of Lithuania
Švitrigailos str. 18
LT-03223 Vilnius
LITHUANIA
Phone: +370 5 271 6866, +3705 271 75 11 (24/7)
Fax.: +370 5 216 3494, e-mail: pagd@vpgt.lt.